

## APPENDIX A - AUTOMOBILE CLASSES

It is the intention of SCCA® to class all essentially identical vehicles from the same manufacturer (which differ only cosmetically or in nominal marquee designation) in the same class. If a version is omitted from the class listing, and is otherwise eligible for the category, then its classification will be the same as the equivalent car which is listed.

To use the catch-alls at the end of the specific car classes in Appendix A, start from the last class in the category and work up the classes until a class is found. **Such unclassified cars will not be eligible for Solo® National Tours or the Solo® National Championships.**

See the following page for vehicles which are excluded from the Street category.

For Street Category vehicles, the vehicle manufacturer's specifications shall be used for specific wheel diameter and maximum rim width specifications.

### ABBREVIATIONS:

AWD - All-wheel drive

FWD - Front wheel drive

IRS - Independent rear suspension

N/A - Normally aspirated (atmospheric)

NOC - Not otherwise classified

RWD - Rear wheel drive

S/C - Supercharged

T - Turbocharged

V(n) - (n) refers to number of engine cylinders in a "Vee" block

(n)v - (n) refers to number of engine intake and exhaust valves

## STREET CATEGORY

EXCLUDED FROM THE STREET CATEGORY FOR REASONS OF STABILITY PER SECTION 3.1:

Dodge Caliber (non-SRT)  
Fiat 500 (non-Abarth) (2012-17)  
Ford Fiesta (non-ST) (2011-17)  
Geo Tracker  
Jeep CJ series  
MINI Countryman  
Nissan Juke  
Suzuki Samurai  
Suzuki Sidekick  
Scion iQ  
Scion xB (2004-06)

THE FOLLOWING MAKE/MODELS ARE NOT ELIGIBLE FOR THE STREET CATEGORY:

Audi R8 (V10)  
BMW 325 M-Technic  
BMW M3 Lightweight  
Callaway Corvette  
Chevrolet Camaro SS and Pontiac Firebird WS6 (Level 1 & Level 2 suspension packages) (4th gen) (1993-2002)  
Ferrari 355  
Ferrari 360 (NOC)  
Ferrari (NOC)  
Ford GT  
Lamborghini (NOC)  
Lotus Elan M100  
Lotus Sport Elise (2006)  
Mercedes-Benz Black Edition (all)  
MINI Cooper S JCW (2002-05)  
MINI Cooper Hardtop JCW GP (2013)  
Nissan GT-R NISMO & Track Edition (2012-17)  
Oldsmobile 442 HO W-41 (Sports package option)  
Pontiac Firebird Firehawk  
Porsche 911 GT2 (2002-05)  
Porsche 911 GT3 RS (997) (2007-08)  
Porsche 911 Turbo AWD (NOC)  
Porsche 911 Turbo S & 3.6S (964) (1992-94)  
Saleen SC (Mustang)

## SUPER STREET CLASS (SS)

ACURA  
NSX (2017)  
ALFA ROMEO  
4C (2015-17)  
AUDI  
TT RS (2012-13)  
R8 (V8) (2008-15)  
BMW  
Z8  
CHEVROLET  
Corvette Grand Sport (2017)  
Corvette Z06 (C7) (2015-17)  
Corvette ZR1 (2009-13)  
DODGE/SRT  
Viper ACR (2016-17)  
Viper/Viper GTS (non-ACR, non-TA) (2013-14)  
Viper SRT (non-ACR, non-TA 2.0) (2015-17)  
Viper (NOC)  
FERRARI  
360 Modena & Spider (non-Challenge Stradale) (1999-2005)  
FORD  
Mustang Cobra R ('93, '95, '00)  
Mustang Shelby GT350R (2016-17)  
LOTUS  
Elise (non-SC) (2005-11)  
Elise SC (2008-11)  
Evora S (2011-15)  
Exige (non-supercharged) (2006)  
Exige S & S/C (2006-11)  
MCLAREN  
MP4-12C (2012-14)  
MERCEDES-BENZ  
AMG (NOC)  
NISSAN  
GT-R (2009-11)  
GT-R (excluding NISMO & Track Edition) (2012-17)  
PORSCH  
*718 Boxster S (2017)*  
*718 Cayman S (2017)*  
911 (991, incl. GT3; non-turbo, non-GT3 RS) (2012-17)  
911 (997 chassis) (2005-12)  
911 GT3 (996 & 997, non-RS)  
911 Turbo  
911 Turbo & Turbo S (996 chassis) (2001-05)

**SS (CONTINUED)**

911 Turbo (964, non-S, non-3.6S)  
(1989-94)

911 Turbo (930) (1974-89)

Boxster GTS (2015-16)

Boxster S (981 chassis) (2013-16)

Boxster Spyder (2011-13)

Cayman GT4 (non-Clubsport)  
(2016)

Cayman GTS (2015-16)

Cayman R (2012)

Cayman S (981 chassis) (2013-16)

**TESLA MOTORS**

Roadster (all) (2008-13)

**"CATCH-ALL":**

All eligible unclassified cars not covered by another catch-all listing.

**A STREET CLASS (AS)****ACURA**

NSX Alex Zanardi Signature Edition

**AUDI**

TTS (2016-17)

**BMW**

M3 & M4 (F80/F82) (2015-17)

**CADILLAC**

XLR

**CHEVROLET**

*Camaro SS 1LE (V8) (2017)*

Camaro Z28 (2014-15)

Camaro ZL1 (2012-15)

*Corvette Stingray (C7) (2014-17)*

Corvette (C6, non-ZR1) (2005-13)

Corvette Z06 (C5) (2001-04)

**DODGE**

Viper (non-ACR) (2008-10)

Viper GTS (1996-2005)

Viper R/T (1992-2003)

Viper SRT-10 (2003-07)

**FORD**

Mustang Boss 302 Laguna Seca  
(2012-13)

Mustang Shelby GT350 (2016-17)

Mustang Shelby GT500 (2007-14)

**HONDA**

S2000 CR

**JAGUAR**

F-Type (except Project 7) (2014-17)

**LOTUS**

Esprit Turbo (1996-2004)

Evora (non-supercharged) (2010-15)

**MAZDA**

RX-7 (1993-95)

**MERCEDES-BENZ**

*SLK55 AMG (2012-16)*

**MORGAN**

Plus 8

Roadster (V6)

**NISSAN**

350Z NISMO (2004-2008)

370Z NISMO (2009-17)

**PONTIAC**

Solstice GXP (Turbo) (2007-09)

**AS (CONTINUED)****PORSCHE***718 Boxster (non-S) (2017)**718 Cayman (non-S) (2017)*

911 (996, non-turbo) (1998-2005)

Boxster (non-GTS, non-S, non-Spyder) (2013-16)

*Boxster S (987 chassis) (2009-12)*

Cayman (non-GT4, non-GTS, non-R, non-S) (2013-16)

*Cayman S (987 chassis) (2009-12)***SATURN**

Sky Redline (Turbo) (2007-10)

**B STREET CLASS (BS)****ACURA**

NSX (non-Zanardi Edition)

**AUDI**

RS 4 (2007-08)

RS 5 (2013-15)

RS 6 (C5 chassis) (2003-04)

S3 (2.0T) (2015-17)

S4 (2010-16)

S5 (2008-17)

S6 (2013-17)

S7 (2012-17)

TT quattro (AWD) (2008-17)

TTT (2009-15)

**BMW**

1 Series M Coupe (2011-12)

M Coupe &amp; Roadster (2001-02)

*M2 (2016-17)*

Z4 Coupe (incl. M) (2006-08) &amp; Roadster (incl. M) (2002-17)

**CADILLAC***ATS-V (2016-17)***CHEVROLET***Camaro V6 1LE (2017)*

Corvette (C4, all) (1984-96)

Corvette (C5, non-Z06) (1997-2004)

**DETOMASO**

Pantera

Mangusta

**FORD***Focus RS (2016-17)***HONDA**

S2000 (non-CR)

**JAGUAR**

XKR Coupe

**LEXUS**

RC-F (2015-17)

**MASERATI**

Coupe (2002-07)

GranSport (2004-07)

Spyder (2002-07)

**MAZDA**

Miata Club Sport (2003)

MX-5 Miata MS-R (2007)

**MERCEDES-BENZ**

C32 AMG (2002-04)

CLA45 AMG (2014-15)

CLK55 AMG (2001-06)

E63 AMG (2010-16)

GLA45 AMG (2015-17)

SLK32 AMG (2002-04)

**BS (CONTINUED)**

SLK350 (2005-16)  
 SLK55 AMG (2005-10)  
 MITSUBISHI  
   Lancer Evolution (2003-15)  
 NISSAN  
   370Z (non-NISMO) (2009-17)  
 PONTIAC  
   Solstice (non-turbo) (2007-10)  
 PORSCHE  
   911 (1993, non-turbo) (1995-98)  
   968  
   *Boxster (non-S) (2009-12)*  
   Boxster (1987, non-S) (2005-08)  
   *Boxster S (2005-08)*  
   *Cayman (non-S) (2009-12)*  
   Cayman (non-S) (2005-08)  
   *Cayman S (2006-08)*  
   Macan S & Turbo (2015-17)  
 SALEEN  
   Mustang (non-supercharged)  
 SATURN  
   Sky (non-turbo) (2007-10)  
 SHELBY  
   Cobra  
 SUBARU  
   WRX STI (incl. Special Edition)  
   (2004-17)  
 TOYOTA  
   Supra Turbo (1993½-98)  
 TVR  
   8-cyl  
   V6  
   V8  
   V12  
 VOLKSWAGEN  
   Golf R (2015-17)

**C STREET CLASS (CS)**

BMW  
   M Coupe & M Roadster (1996-2000)  
   M3 (E30) (1988-91)  
   Z3 (6-cyl, non-M) (1997-2002)  
 CHEVROLET  
   Corvette (1963-82)  
 CHRYSLER & PLYMOUTH  
   Prowler  
 FERRARI  
   308 & 328  
*FIAT*  
   *124 Spider (incl. Abarth) (2017)*  
 JAGUAR  
   XKE  
 JENSEN  
   Jensen Healey  
 LOTUS  
   7 & 7A  
   Eclat  
   Elan (RWD, all)  
   Elite (all)  
   Esprit (non-turbo)  
   Europa  
 MASERATI  
   BiTurbo  
 MAZDA  
   MX-5 Miata (non-MS-R 2007)  
   (2006-15)  
   MX-5 Miata (ND chassis) (2016-17)  
   RX-7 Turbo (1987-91)  
   RX-8  
 MERCEDES-BENZ  
   SLK  
 NISSAN  
   300ZX Turbo (1990-96)  
   350Z (non-NISMO) (2003-09)  
 PORSCHE  
   356 Carrera (4-cam)  
   911 (non-turbo, NOC)  
   911 Club Sport  
   914 (all)  
   928 (all)  
   944 (16v)  
   944 Turbo (all)  
   *Boxster (1986 chassis, all) (1997-2004)*  
   Carrera 2 & Carrera 4 (1964)  
   (1989-94)

**CS (CONTINUED)****SCION**

FR-S (with TRD suspension; incl.  
Release Series 1.0) (2013-16)

**TOYOTA**

MR2 Turbo

**D STREET CLASS (DS)****ACURA**

Integra Type R

**AUDI**

A3 (2.0T; FWD and AWD) (2015-16)

A3 quattro (3.2L V6, AWD)  
(2006-09)

A5 (2008-17)

S4 (2000-03)

TT (1.8T, non-quattro/FWD)  
(2000-06)

TT (2.0T, non-quattro/FWD)  
(2008-09)

TT quattro (AWD) (2000-06)

**BMW**

128i (2008-13)

228i (F22 chassis) (2014-16)

328i (2012-16) & 328d (2014-17)  
(F30/F31/F34 chassis)

3 Series (E46 & E9X chassis) (non-  
M3, non-turbo) (1999-2012)

428i (F32/F33/F36) (2014-16)

M3 (E36 chassis) (1995-99)

**CADILLAC**

ATS (2.0L Turbo) (2013-17)

CTS (non-V, non-Vsport) (2003-17)

**CHEVROLET**

Camaro LT (2.0L Turbo) (2016-17)

Camaro (V6) (2010-15)

Cobalt SS (2.0L Turbo) (2008-10)

**CHRYSLER**

300 (V6) (2011-17)

Crossfire (non-SRT-6)

**DODGE**

Challenger (V6) (2011-17)

Charger (V6) (2011-17)

**EAGLE**

Talon Turbo (AWD)

**FORD**

Mustang EcoBoost (2015-17)

Mustang V6 (2011-17)

**HYUNDAI**

Genesis Coupe (4-cyl Turbo)  
(2013-16)

Genesis Coupe (V6) (2010-12)

**INFINITI**

G35 Coupe (2003-07)

G35 Sedan (2003-09)

**LEXUS**

IS 350 (2006-17)

IS 250 (2006-15)

**DS (CONTINUED)***IS 300 (2001-05)**GS 350 (2005-17)**SC 400 (1992-2000)***MAZDA***Mazdaspeed6***MERCEDES-BENZ***C-Class (6-cyl, non-AMG) (2001-16)**CLK (V6) (1998-2009)***MINI***Cooper Clubman JCW (2009-14)**Cooper Clubman S (2008-14, 2016-17)**Cooper Coupe JCW (2013-15)**Cooper Coupe S (2013-15)**Cooper Hardtop JCW (2006-17)**Cooper Hardtop S (2002-17)**Cooper Roadster JCW (2012-15)**Cooper Roadster S (2012-15)***MITSUBISHI***Eclipse Turbo (AWD)**Lancer Ralliart (2009-15)***SAAB***9-2X Aero (2.0L Turbo) (2005-06)***SCION***FR-S (without TRD suspension components) (2013-16)***SUBARU***BRZ (2013-16)**Forester 2.5XT (2004-13)**Legacy 2.5GT (2005-12)**WRX (non-STI) (2001-17)***VOLKSWAGEN***Golf R (2012-13)**R32 (Golf chassis) (2004, 2008)***E STREET CLASS (ES)****ALFA ROMEO***2000 Spider**2000 GTV***BMW***Z3 (4-cyl) (1996-98)***DATSUN***2000**240Z**260Z**280Z**280ZX (non-turbo)***DODGE***Charger Turbo**GLH Turbo***FIAT & BERTONE***X1/9***MAZDA***Mazdaspeed Miata (2004-05)**Miata (1990-2005)**RX-7 (non-turbo)***MORGAN***4/4 & Plus 4***PONTIAC***Fiero (V6)***PORSCHE***924 Turbo (Audi engine) (1979-81)**924S (1986-88)**944 (8v)***SHELBY***Charger GLH-S (1987)***SUNBEAM***Tiger***TOYOTA***MR2 (non-turbo) (1985-95)**MR2 Spyder (2000-05)**MR2 Supercharged***TRIUMPH***TR-8***TVR***4-cyl  
inline-6*

**F STREET CLASS (FS)****AMC**

AMX

Javelin (V8)

**AUDI**

A6 (V6 Supercharged) (2008-17)

A6 (V8) (1997-2011)

S4 (V8) (2004-09)

**BMW**

135i &amp; 135is (2008-13)

335d (2009-11)

3 Series (F30/F31 chassis, 6-cyl  
Turbo; non-M3) (2012-17)

435i (F32/F33/F36) (2014-17)

5 series (V8)

6 series (E63/E64 & F12/F13  
chassis) (2003-17)

8 series coupe

M235i (F22) (2014-16)

M3 (E46 & E90/E92/E93 chas-  
sis) (2000-13)

M5 (1988-93, 2000-10)

**BUICK**Regal & Grand National (Turbo  
V6)**CADILLAC**

ATS (3.6L V6)

CTS-V &amp; CTS-Vsport

**CHEVROLET**Camaro (V8 non-supercharged,  
NOC)

Camaro LT (V6) (2016-17)

Camaro SS (base car only incl.  
GM-installed 1LE) (1998-  
2002)

Camaro SS (incl. 1LE) (2010-15)

Camaro SS (non-1LE) (2016-17)

Corvette (1953-62)

**CHRYSLER**

300 (V8, all) (2004-17)

SRT-6 (2005-06)

**DATSUN**

280ZX Turbo

**DODGE**

Challenger (V8, all) (2008-17)

Charger (V8, all) (2006-17)

Magnum (V8) (2005-08)

Ram SRT10 (2004-06)

Stealth Turbo

**FORD**

Crown Victoria

Mustang Boss 302 (non-Laguna  
Seca) (2012-13)

Mustang Cobra (2003-04)

Mustang GT (2010-17)

Mustang Mach 1 (2003-04)

Mustang Shelby GT (T82 & 54U  
factory option package only)  
(2007-08)

Mustang SVT Cobra

Mustang (V8, NOC)

Thunderbird (V8) (1955-88,  
2002-05)**GMC**

Syclone

Typhoon

**HYUNDAI**

Genesis Coupe (V6) (2013-15)

**INFINITI**

G37 Coupe &amp; Sedan

Q45

**JAGUAR**

S-Type R

XJ (1998-2017)

XJ-S (1976-96)

XK8 (1997-2006)

Sedan (12-cyl)

**LEXUS**

GS 400 (1998-2000)

IS F (2008-14)

RC (non-F) (2015-17)

**LINCOLN**

LS (V8) (2000-06)

Mark VIII (1993-98)

**MERCEDES-BENZ**

C300 (2007-16)

C36 AMG

C55 AMG (2005-06)

C63 AMG (non-Black Series)  
(2008-17)

CLK (non-V6)

E55 AMG

**MERCURY**

Capri (V8)

Cougar (V8) (1967-88)

**MITSUBISHI**

3000 GT Turbo

**NISSAN**

300ZX (non-turbo) (1990-96)

300ZX Turbo (1984-89)



**FS (CONTINUED)****PONTIAC**

- Firebird (V8, NOC)
- Firebird Trans Am & Formula (WS6, base car only, including GM-installed 1LE) (1998-2002)
- G8 (V8 & NOC) (2008-09)
- GTO (2004-06)
- Trans Am Turbo (V6) (1989)

**PORSCHE**

- Panamera (2010-16)

**SHELBY**

- GT350 (1965-70)
- GT500 (1967-70)

**TESLA MOTORS**

- Model S (2012-14)

**TOYOTA**

- Supra (non-turbo) (1993-98)
- Supra Turbo (1987-92)

**TRIUMPH**

- Stag

**“CATCH-ALL”:**

- V8 sedans, pick-ups, and sedan-derived convertibles (NOC)

**G STREET CLASS (GS)****AUDI**

- A3 (1.8T; FWD) (2015-16)
- A4 (V6 & 4-cyl Turbo)
- A6 (V6 NOC & 4-cyl)
- A8 & V8 quattro (AWD)
- Quattro (Coupe Turbo)

**BMW**

- 320i (F30/F31/F34) (2014-17)
- 323i Convertible, 323is, 328i Convertible, & 328is (E36) (1999)
- 3 Series (6-cyl, non-M3; E30, E36) (1984-98)
- 5 Series (E28, E34, & E39 chassis; 6-cyl, non-M5) (1985-2003)
- 6 Series (E24 chassis; 6-cyl, non-M6) (1984-89)

**BUICK**

- Verano Turbo (2013-17)

**CADILLAC**

- ATS (2.5L 4-cyl non-turbo) (2013-16)

**CHEVROLET**

- Cobalt Sport (2.4L) (2008)
- Cobalt SS (2.0L SC) (2005-07)
- Cobalt SS (2.4L) (2006-07)
- Malibu (all) (2008-17)

**CHRYSLER**

- 200 (V6) (2010-17)
- 300 (V6) (2004-10)
- Conquest Turbo
- PT Cruiser (Turbo) (2003-09)

**DODGE**

- Caliber SRT4
- Challenger (V6) (2008-10)
- Charger (V6) (2006-10)
- Conquest Turbo
- Magnum (V6) (2005-08)
- Neon (1995-99)
- SRT-4 (Neon chassis)

**FORD**

- Focus ST (2013-17)
- Fusion (6-cyl)
- Mustang (V6) (1994-2010)
- Mustang SVO
- Taurus SHO (1989-99, 2010-17)
- Thunderbird (V8 & V6 Supercharged) (1989-97)
- ZX2 S/R (1999-2003)

**GS (CONTINUED)****GENERAL MOTORS**

FWD models (4-cyl Turbo, 6-cyl,  
Ecotec, or Quad 4 engines,  
NOC)

**HONDA**

Civic Si Mugen (2008)

**HYUNDAI**

Genesis Coupe (4-cyl Turbo)  
(2010-12)

Veloster Turbo Rally Edition  
(2016-17)

**ISUZU**

Impulse Turbo (all)

**JAGUAR**

*S-Type (6-cyl) (2002-08)*

*X-Type (3.0L) (2002-08)*

**KIA**

Forte & Forte Koup (2.4L)

**LEXUS**

SC 300 (1992-2000)

**MAZDA**

323 GT Turbo (sedan)

323 GTX Turbo (AWD)

Mazdaspeed3

Mazdaspeed Protégé

**MERCEDES**

190E (6-cyl 2.6L & 4-cyl 16v)

C230 (1999-2007)

**MERCURY**

*Cougar (V8 & V6 Supercharged)*  
(1989-97)

**MERKUR**

XR4Ti

**MINI**

*Cooper Clubman (non-S, non-  
JCW) (2016-17)*

Cooper Hardtop (non-S, non-  
JCW) (2014-17)

**MITSUBISHI**

Galant (V6 & 4-cyl Turbo)

Starion Turbo

**PLYMOUTH**

Neon (1995-99)

**SAAB**

9-2X Linear (2.5L)

Turbo models (NOC)

**SATURN**

ION Redline (Turbo)

**SUBARU**

Impreza 2.5 (non-turbo)

**TOYOTA**

Celica All-Trac Turbo

Celica GT (2000-05)

Celica GTS (2000-03)

**VOLKSWAGEN**

1.8L Turbo models (NOC) (2002-  
06)

Beetle & New Beetle (1.8L Turbo)

Corrado

Golf, GTI & Jetta (1.8L Turbo)

Golf, GTI & Jetta (VR6 24v)

(2002-05)

GTI (2006-17)

Jetta & GLI (2.0L Turbo) (2006-  
17)

Passat (1.8L Turbo)

Passat (W8)

**VOLVO**

S60R (except Polestar)

V70R (except Polestar)

Turbo models (NOC)

**H STREET CLASS (HS)****ACURA**

CL (all)

*ILX*

Integra (all except Type R) (1986-2001)

Legend

RSX

*RSX Type S*

TL

TSX

Vigor

**ALFA ROMEO**

164 (non-S) (1991-93)

1300

1600

1750 &amp; 1750 GTV

2000 (4-door sedan)

GTV V6

Milano

Sedan (NOC)

**AMC**

Gremlin (4-cyl &amp; 6-cyl)

Spirit (4-cyl &amp; 6-cyl)

**AUDI**

80

90

100 (non-S4)

200 Turbo quattro

4000

5000 (non-turbo)

5000 Turbo

A3 (FWD) (2006-13)

Coupe quattro (non-turbo)

S4 (100 CS chassis) (1992-94)

**AUSTIN**

Mini

**AUSTIN-HEALEY**

(all)

**BMW**

1600

1800

2000 CS coupe

2002

318 (all)

320

7 Series (6-cyl)

*i3 (2014-16)***BUICK**

Reatta

*Verano (non-turbo) (2013-17)***CADILLAC**

Catera

**CHEVROLET**

Aveo

Beretta (NOC)

Camaro (4-cyl &amp; 6-cyl) (1967-2002)

Chevette

Cobalt (2.2L, all) (2005-10)

Corvair (all)

Cruze

Nova (FWD) (1986-88)

Nova (RWD, 4-cyl &amp; 6-cyl) (1962-79)

Sonic (all) (2012-17)

Spectrum

Sprint

Vega &amp; Cosworth Vega

Volt (2011-17)

**CHRYSLER***200 (4-cyl) (2010-17)*

300M (1999-2004)

Cirrus (V6)

Laser (all)

PT Cruiser (non-turbo) (2001-2010)

Sebring (all)

**DAEWOO**

(all)

**DATSUN**

1200

1500 &amp; 1600 Roadster

210 &amp; B-210

310

510

610

710

810

F10

**DODGE**

024

Avenger (all)

Challenger (1978-83)

Charger (non-turbo, FWD) (1981-87)

Colt (all)

Dart (FWD) (2013-17)

Daytona (all)

GLH (non-turbo)

Intrepid

Lancer Turbo

**HS (CONTINUED)**

Neon (2000-05)	del Sol & Civic del Sol (all)
Omni	Fit
Rampage	Insight
Shadow (all)	Prelude (all)
Spirit (all)	HYUNDAI
Stealth (non-turbo)	Accent (1995-2017)
Stratus (all)	Elantra (1990-2017)
EAGLE	Scoupe
Summit (all)	Tiburon
Talon (all, FWD)	Veloster (non-turbo) (2012-17)
FIAT	<i>Veloster Turbo (non-Rally Edition)</i>
500 Abarth (2012-17)	(2012-17)
NOC	NOC
FORD	INFINITI
Aspire	G20
Contour (all)	M30
Cortina	ISUZU
Escort (non-ZX2 S/R)	I-Mark
EXP	Impulse (non-turbo)
Festiva	Stylus
Fiesta (1976-80)	JAGUAR
Fiesta ST (2014-17)	120
Five Hundred	140
Focus (all except ST 2013-17)	150
Fusion (4-cyl)	X-Type (2.5L) (2002-05)
Mustang (4-cyl, 6-cyl, & 4-cyl	KIA
Turbo except SVO) (1964½-	Forte & Forte Koup (2.0L)
93)	Forte5 (2014-17)
Pinto	Optima
Probe (all)	Rio (2012-17)
Taurus (non-SHO)	Sephia
Tempo (all)	Spectra5
Thunderbird (V6, non-S/C)	LANCIA
(1989-97)	Beta
Thunderbird Turbo Coupe	Scorpion
ZX2 (non-S/R)	LEXUS
GENERAL MOTORS	CT 200h (2011-17)
FWD models (NOC)	ES 250
RWD V6 models (NOC)	ES 300
GEO	GS 300
Metro	LINCOLN
Prizm	LS (V6)
Spectrum	LOTUS
Storm	Cortina
HONDA	MAZDA
600	323 (non-turbo)
800	626
Accord (all)	808
Civic (all, non-Mugen 2008)	929
CRX (all)	Cosmo
CR-Z	GLC

**HS (CONTINUED)**

Mazda2 (2011-14)	240SX
Mazda3 (2004-17)	300ZX (non-turbo) (1984-89)
Mazda6 (all)	Altima (all)
Millenia (all)	Maxima (all)
MX-3	NX1600
MX-6 (all)	NX2000 (1991-93)
Protégé (non-Mazdaspeed)	Pulsar
R100	Sentra (all)
RX-2	Stanza
RX-3	Versa (2007-17)
RX-4	OLDSMOBILE
MERCEDES	Calais W41
280 (1995-2000)	OPEL
NOC	1100
MERCURY	1900
Bobcat	GT
Capri (all except V8)	Isuzu
Cougar (4-cyl & V6 non-S/C)	Manta
LN-7	PEUGEOT
Lynx	405 (all)
Milan (all)	505 (1979-91)
Montego	PININFARINA
Mystique (all)	2000
Sable	PLYMOUTH
Scorpio	Acclaim (all)
Topaz (all)	Arrow
Tracer	Champ
MG	Colt
all	Horizon
MINI	Laser (non-turbo)
Clubman (non-S, non-JCW)	Neon (2000-01)
(2008-14)	Sapporo
Cooper Coupe (non-S, non-JCW)	Scamp
(2012-15)	Sundance (all)
Cooper Hardtop (non-S, non-JCW) (2002-13)	TC3
Cooper Roadster (non-S, non-JCW) (2012-15)	Turismo
MITSUBISHI	PONTIAC
3000 GT (non-turbo)	Fiero (4-cyl)
Cordia	Firebird (4-cyl & 6-cyl)
Eclipse (all, FWD) (1989-2012)	G5 (all)
Galant (4-cyl non-turbo)	G8 (V6) (2008-09)
Lancer (non-turbo)	LeMans (FWD) (1988-93)
Mirage	Sunfire
Precis	T-1000
Premier	Vibe
Starion (non-turbo)	PORSCHE
Tredia	356 (non-Carrera)
NISSAN/DATSUN	912
200SX (all)	924 (Audi engine, non-turbo)
	RENAULT
	NOC

**HS (CONTINUED)****SAAB**

900 (V6) (1994-97)  
NOC

**SATURN**

8v  
Astra (2008-09)  
DOHC model (NOC)  
Ion (non-turbo)  
L series (all)

**SCION**

*iA (2016)*  
*iM (2016)*  
tC (incl. Release Series 5.0 2009)  
(2005-16)  
xA (2004-06)  
xB (2008-12)

**SHELBY**

Charger (non-turbo)

**SUBARU**

Impreza 2.0i  
Impreza (NOC)  
Legacy (NOC)  
SVX  
Sedan Turbo (NOC)  
NOC

**SUNBEAM**

Alpine

**SUZUKI**

Esteem GL  
Forenza  
Kizashi (2010-13)  
Swift  
SX4 sedan (2007-13)

**TOYOTA**

Camry (all)  
Celica (FWD; NOC)  
Celica (all, non-AWD) (1971-99)  
Corolla  
Cressida  
Echo  
Matrix  
Paseo  
Prius (all)  
Starlet  
Supra (non-turbo) (1979-92)  
Tercel  
Yaris

**TRIUMPH**

all except Stag & TR-8

**VOLKSWAGEN**

air-cooled engine (all)  
diesel engine (non-turbo) (all)  
Beetle (2.0L)  
Dasher  
Eos (2.0T) (2007-16)  
Fox  
Golf, GTI & Jetta (16v *non-turbo*)  
Golf, GTI & Jetta (8v, all)  
Golf TDI  
Jetta (2.5L) (2005-14)  
Jetta TDI (2005-06, 2009-16)  
New Beetle (NOC)  
Passat (4-cyl non-turbo & V6)  
Quantum  
Rabbit & Rabbit GTI (all, NOC)  
Rabbit (2007-09)  
Scirocco (all)  
VR6 (FWD, NOC)

**VOLVO**

C30  
NOC

**YUGO**

all

“CATCH-ALL”:

RWD pickup trucks (NOC)

# TIRE RACK<sup>®</sup>.com

**ENKEI**  
RACING SERIES

## RPF1

**bronze**

Also available: gold (17 and 18), black (15-18),  
bright silver (14-18) and special brilliant coating (15 only)

14x7	17x8	18x8
15x7	17x8.5	18x8.5
15x8	17x9	18x9
16x7	17x9.5	18x9.5
16x8	17x10	18x10
17x7	18x7.5	18x10.5
17x7.5		



**Kasei**

## K1 Racing

**silver**

15x7	17x8.5
------	--------



**TR**  
Motor  
Sports

## C4

**light grey**

Also available: black (15 only)

17x8	18x8.5
17x9	18x9
18x8	18x9.5

## FF10

**light grey**

15x7	17x8
17x7	17x9



**Advanti**  
TST

## Storm S1

**black**

Also available: hyper silver

15x7	17x7
15x8	17x8
15x9	17x9



## Storm S2

**bronze**

Also available: black

15x7
15x8
15x9



## SUPER STREET-R CLASS (SSR)

This class combines high-performance production cars with the highest performing DOT tires. All rules are the same as Section 13, Street Category, with the following exceptions:

### 1. TIRES

Sections 13.3.A.1 (minimum UTQG Treadwear Grade), 13.3.A.2 (minimum molded tread depth), and 13.3.A.5 (tires must be designed for highway use) does not apply. (DOT competition, DOT-R, R-comps, etc. tires are eligible.)

Section 13.3.C.4 (the tire exclusion list) is replaced with the following list which may be altered at any time by the SEB upon notification of the membership:

- Kumho Ecsta W710

### 2. WHEELS (REPLACING SECTION 13.4)

Any type wheel may be used provided it is the same width and diameter as standard and as installed does not have an offset more than  $\pm\frac{1}{4}$ " (0.25 in., 6.35 mm) from the standard wheel for the car. The resultant change in track dimensions is allowed. Wheel spacers are permitted provided the resultant combination complies with the offset requirements of this Section. On vehicles supplied with an OE wheel spacer, the wheel spacer shall be considered as a part of the wheel. Wheel studs, lug nuts, valve stems (including pressure-relief types), and/or bolt length may be changed. Tire pressure monitoring sensors (TPMS) may be removed.

### 3. EXHAUST

The exit of the exhaust in the original location (Section 13.10.C) is not compulsory.

### 4. PARTICIPATION REQUIREMENT

If in two (2) consecutive SCCA® Solo® National Championships class SSR fails to achieve atten-

dance of 35 total participants in both Open and Ladies, the class will be eliminated.

### AUDI

TT RS (2012-13)

### CHEVROLET

Corvette Stingray (C7) (2014)

Corvette (C6, non-ZR1) (2005-13)

Corvette Z06 (C5) (2001-04)

### DODGE

Viper (non-ACR) (2008-10)

Viper GTS (1996-2005)

Viper R/T (1992-2003)

Viper SRT-10 (2003-07)

### LOTUS

Elise (non-SC) (2005-11) (see Appendix F)

Evora S (2011-14)

Exige (non-supercharged) (2006)

### MERCEDES-BENZ

AMG (NOC)

### PORSCHE

911 (991, non-GT3) (2012-14)

911 (997 chassis)

911 GT3 (997 chassis, non-RS)

911 GT3 (996 chassis)

911 Turbo (930) (1974-89)

Boxster S (2009-14)

Boxster Spyder (2011-12)

Cayman R (2012)

Cayman S (2009-14)

### TESLA MOTORS

Roadster (all) (2008-13)



# TIRE RACK® .com

## STOPTECH HIGH PERFORMANCE BRAKE SYSTEMS



### STREET PERFORMANCE BRAKE PADS

Combining the benefits of premium street brake pads with aggressive friction formulas suitable for light track days and autocross events.

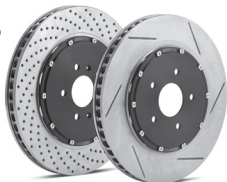


### SPORT DRILLED OR SLOTTED ROTORS

- Premium black E-coating finish
- 100% fully machined finish including hats
- Cryogenically-treated rotors available

### DRILLED OR SLOTTED AERO-ROTOR KITS

- Pre-assembled 2-piece rotors sold in axle pairs



### PREMIUM ROTORS

- Cryogenically-treated rotors available

### POSI QUIET LOADED CALIPERS

- Application-specific Posi Quiet pads



## HAWK PERFORMANCE



### THE COMPLETE LINE OF HAWK COMPETITION PADS

Hawk Black, Blue 42, HT and DTC motorsports pads

Also Available: *Performance Ceramic pads, HP Plus Race pads, High Performance Street/Race pads, High Performance Street 5.0 pads, HP SuperDuty pads*



### TYPE 200 AMBER BRAKE FLUID 1L \*21<sup>50</sup>

Ideal for track and street use.



## STOPTECH

### STR-660 ULTRA PERFORMANCE RACE BRAKE FLUID 500ML \*28

Ideal for race use.



### G-STOP BRAKELINE KIT

High performance stainless steel brake lines provide a more responsive and firm brake pedal.



### 4000 & 5000 SERIES T3 ROTORS

- Unique slotted design for the road or track
- 5000 Series has a 2-piece design for extreme performance with a black aluminite center hat



## FREE SHIPPING

For all brakes, suspension and other parts and accessories on all orders over \$50.  
Visit [www.tirerack.com/freeshipping](http://www.tirerack.com/freeshipping) for details.

**STREET TOURING® CATEGORY****STREET TOURING® ULTRA (STU)**

AUDI  
   S4  
   S5  
   TTS quattro (2008-15)  
 BMW  
   135i  
   228i (2014-15)  
   3 Series (E9x chassis, NOC incl. M3) (2006-13)  
   M3 (E46) (2000-05)  
 CADILLAC  
   *ATS (2.0L) (2012-16)*  
 CHEVROLET  
   Camaro (N/A)  
   Corvette (C4, excl. LT4 engine & ZR1) (1984-96)  
   Corvette (C5, non-Z06) (1997-2004)  
   *SS (2013-17)*  
 DODGE  
   Challenger (V8, N/A) (2008-15)  
   Charger (V8, N/A) (2006-15)  
 FORD  
   Mustang (N/A)  
   Mustang GT, V6, & EcoBoost (2.3T) (2015-17)  
 HYUNDAI  
   Genesis (V6)  
   Genesis (2.0T 4-cyl) (2013-16)  
 INFINITI  
   G35 Coupe  
   G37  
 LEXUS  
   IS F  
 MAZDA  
   Mazdaspeed Miata (2004-05)  
 MERCEDES-BENZ  
   CLK430 (1999-2003)  
   CLK55 (2001-06)  
 MITSUBISHI  
   Lancer Evolution  
 NISSAN  
   300ZX Turbo (1984-89)  
   350Z (non-NISMO)  
 PONTIAC  
   Firebird (N/A)  
   GTO (2004-06)  
 PORSCHE  
   Boxster (986 and 987.1; base

  model) (1997-2008)  
   Boxster S (986) (2000-04)  
   Cayman (987.1; base model) (2007-08)  
 SUBARU  
   Impreza WRX STI  
 VOLVO  
   S60R  
 “CATCH-ALL”:  
   Sedans & Coupes NOC (non-sports-car-based; 4-seat minimum; over 5.1L normally aspirated or 2.0L to 3.1L forced induction)

**STREET TOURING® ROADSTER (STR)****BMW**

M Coupe (1998-2002)  
 M Roadster (1998-2002)  
*M3 (E36, non-LTW) (1995-99)*  
 Z3 (6-cyl)  
 Z4 (non-turbo, non-M)

**DATSUN**

240Z  
 260Z  
 280Z  
 280ZX (non-turbo)

**HONDA**

S2000

**MAZDA**

Miata (non-turbo) (1994-2005)  
 MX-5 Miata (2006-15)  
 MX-5 Miata (2016)  
 RX-7 GSL  
 RX-7 GSL-SE  
 RX-7 GXL  
 RX-7 GTU (1988)

**NISSAN**

370Z (non-NISMO) (2009-16)

**PONTIAC**

Fiero (V6)  
 Solstice (non-turbo)

**PORSCHE**

911 Carrera (3.2L) (1984-89)  
 911 SC (3.0L) (1978-83)  
 924  
 944 (non-turbo)  
 968

**TOYOTA**

MR2 Spyder  
 MR2 Supercharged (1988-89)

**SATURN**

Sky (non-turbo)

**STREET TOURING® XTREME (STX)****ACURA**

ILX (2013-16)  
 Integra (non-Type R) (1994-2001)  
 Integra Type R

**AUDI**

A3  
 A4  
 TT quattro

**BMW**

128i (2008-13)  
 3 Series (E30 chassis, incl. M3)  
 3 Series (E36 chassis, non-M)  
 3 Series (E46 chassis, non-M)  
 3 Series (E9x chassis, non-M, non-turbo) (2006-13)  
 M5 (E39) (1998-2003)

**CHEVROLET & GMC**

Cobalt (2.4L N/A, 2.0L S/C, & 2.0T)  
 S10 (4-cyl & 6-cyl, N/A)

**DODGE**

Challenger (V6) (2008-16)  
 Charger (V6) (2006-16)  
 Dakota (4-cyl & 6-cyl, N/A)  
 Dart (1.4L Turbo & 2.4L N/A) (2013-16)  
 SRT-4 (2003-05)

**EAGLE**

Talon Turbo (AWD)

**FIAT**

500 Abarth  
 500 Turbo (2013-16)

**FORD**

Fiesta ST  
 Focus ST  
 Ranger (4-cyl & 6-cyl, N/A)

**GMC**

Sonoma (4-cyl & 6-cyl, N/A)

**HONDA**

Civic Si (2006-15)

**HYUNDAI**

Genesis (2.0L Turbo) (2010-12)

**INFINITI**

G35 Sedan

**STX (CONTINUED)****KIA**

Forte (Turbo)

Forte Koup (Turbo)

**LEXUS**

IS 250

IS 300

IS 350

SC300

**MAZDA**

MazdaSpeed3

MazdaSpeed6

MazdaSpeed Protégé

RX-8

**MINI**

Cooper (non-S) (2014-15)

Cooper S & Cooper S JCW (incl.  
2004-05 dealer-installed)**MITSUBISHI**

Eclipse (V6) (2006-12)

Eclipse Turbo (AWD)

*Lancer Ralliart (2008-10)***NISSAN**

240SX

300ZX (non-turbo) (1984-96)

Juke (all) (2011-16) (Must meet  
Section 3.1)

Sentra SE-R (2000-12)

Sentra SE-R Spec V

**PONTIAC**

G5 (2.4L, 2.0L S/C, &amp; 2.0L Turbo)

**SAAB**

9-3 (non-Viggen) (1998-2012)

**SATURN**

Ion (2.4L &amp; 2.0L S/C)

**SCION**

FR-S

**SUBARU***BRZ (2017)*

BRZ (2013-16)

Forester XT (2003-08)

Impreza WRX (non-STI) (2002-  
08, 2015-16)*Impreza WRX (non-STI) (2009-14)*

Legacy GT (2005-08)

**TOYOTA***86 (2017)*

Supra (non-turbo) (1993-98)

Tacoma (1995-2016)

**VOLKSWAGEN**

Beetle (2.0T)

Corrado (all)

Golf, Golf R, GTI (2.0T)

Jetta (2.0T)

Passat (2.0T, VR6, &amp; W8)

R32

**VOLVO**

240 Turbo (1981-85)

C30

**“CATCH-ALL”:**Sedans & Coupes NOC (non-  
sports-car-based, 4-seat mini-  
mum; 3.1L to 5.1L normally  
aspirated or up to 2.0L forced  
induction)

**STREET TOURING® SPORT (STS)****ACURA**

Integra (1986-93)

**AUDI**

A4 (1.8T)

TT Coupe &amp; Roadster (FWD)

**BMW**

Z3 (4-cyl)

**CHEVROLET**

Sonic (Turbo) (2012-15)

Sprint (1985-88)

**CHRYSLER/PLYMOUTH/DODGE**

Neon (all) (1995-99)

**FORD**

Escort GT (1991-96)

Fiesta (1.0T EcoBoost)

ZX2 &amp; Excort ZX2 (1998-2003)

**HONDA**

Accord (1994-97)

Accord (6-cyl) (1998-2013)

Civic (1984-2000)

CRX

del Sol &amp; Civic del Sol

**HYUNDAI**

Accent (2012-15)

Tiburon (V6) (2003-08)

**KIA**

Rio (2012-15)

**MAZDA**

323, 323 GT, &amp; 323 GTX

Miata (non-Torsen differential)  
(1990-97)

Protégé (NOC) (1999-2003)

Protégé MP3

RX-7 (non-turbo, NOC)

**NISSAN**

200SX SE-R (1995-98)

Sentra (1.6L, 1.8L, 2.0L) (1991-  
2012)

NX2000 (1991-94)

**PONTIAC**

Fiero (4-cyl)

**PORSCHE**

914 (4-cyl)

**SATURN**

SL

SW

SC

**SUBARU**

Impreza (1.8L, FWD) (1993-96)

Impreza 2.5 RS (1998-2001)

Legacy (1990-94)

**SUZUKI**

Swift (N/A) (1994)

**TOYOTA**

Celica (non-turbo) (1986-2005)

Corolla (1984-97)

Echo (2000-05)

MR2 (non-supercharged) (1985-  
89)

MR2 (non-turbo) (1991-95)

**VOLKSWAGEN**

Beetle (1.8T &amp; TDI)

Golf (1.8T)

Golf &amp; Jetta (TDI) (2007-15)

Jetta (1.8T)

Passat (1.8T &amp; TDI)

Rabbit, Golf, GTI, Cabrio (1974-  
92)**VOLVO**

240 Turbo (1981-85)

S40 (non-T5)

V40

**“CATCH-ALL”:**Sedans & Coupes NOC (non-  
sports-car-based; 4-seat  
minimum; up to 3.1L normal-  
ly-aspirated)

**STREET TOURING® FWD (STF)**

ACURA  
 RSX  
 TSX  
 CHEVROLET  
 Cobalt (2.2L, N/A)  
 Cruze (2008-15)  
 Spark  
 Sonic (non-turbo) (2012-15)  
 Volt (2011-15)  
 CHRYSLER, PLYMOUTH, & DODGE  
*Neon (2000)*  
*Neon R/T & ACR (2001-04)*  
 DODGE  
 Dart (2.0L N/A) (2013-15)  
 FIAT  
 500 (non-turbo) (2012-15)  
 FORD  
 Fiesta (N/A) (2011-15)  
 Focus (non-turbo)  
 HONDA  
 Accord (4-cyl) (1998-2015)  
 Civic (non-Si) (2006-15)  
 Civic (all) (2001-05)  
 CR-Z  
 Fit  
 Insight  
 HYUNDAI  
 Elantra (2001-15)  
 Veloster (non-turbo) (2011-15)  
 KIA  
 Forte (N/A)  
 Forte Koup (N/A)  
 LEXUS  
 CT200H (2011-15)  
 MAZDA  
 Mazda2  
 Mazda3  
 Mazda6  
 MINI  
 Cooper (non-S) (2000-13)  
 MITSUBISHI  
 Lancer (non-turbo)  
 NISSAN  
 Versa (2007-13)  
 PONTIAC  
 G5 (2.2L)  
 Vibe (2003-10)  
 SATURN  
 Astra  
 Ion (2.2L)

SCION  
 iA (2016)  
 iM (2016)  
 iQ CVT  
 tC  
 xA  
 xB  
 xD (2008-13)  
 SUBARU  
 Impreza 2.0i (2012-15)  
 TOYOTA  
 Corolla (2003-15)  
 Matrix (2003-13)  
 Yaris  
 VOLKSWAGEN  
 Golf (2.5L)  
 Golf & Cabrio (2.0L, 8v) (1998-2006)  
 Golf & Jetta TDI (1999-2006)  
 Beetle (2.0L, 8v) (1998-2005)  
 Beetle (2.5L 5-cyl)  
 Jetta (2.0L, 8v) (2000-04)  
 Jetta (2.5L 5-cyl)

## STREET TOURING® PONY CAR (STP)

### SUPPLEMENTAL CLASS

#### CHEVROLET

*Camaro (V6) (2016-17)*

Camaro (SS, V6, & 1LE) (2010-15)

Camaro (SS, Z28, & V6) (1993-2002)

Camaro (fuel injection, N/A) (1982-92)

*Camaro SS (non-1LE) (2016-17)*  
*SS (2013-17)*

#### DODGE

Challenger (N/A) (2008-15)

Charger (N/A) (2006-15)

#### FORD

Mustang (fuel injected, N/A) (1979-93)

*Mustang Boss 302 (non-Laguna Seca) (2012-13)*

Mustang GT, V6, & EcoBoost (2.3T) (2015-17)

Mustang GT & V6 (2005-14)

Mustang GT & V6 (1994-2004)

#### PONTIAC

Firebird (LS1, LT1, & V6 engine) (1993-2002)

Firebird (fuel injected, N/A) (1982-92)

*G8 GT (2008-09)*

*GTO (2004-06)*

#### “CATCH-ALL”:

American V8-powered, RWD sedans must be naturally-aspirated with a wheelbase greater than 100.0” and a listed curb weight greater than 3200 lbs., NOC (not eligible for National level competition)

## STREET PREPARED CATEGORY

### SUPER STREET PREPARED (SSP)

#### AUDI

R8 (except GT) (2008-15)

*TT RS (2012-13)*

#### CHEVROLET

*Corvette (C7 chassis, all)*

Corvette (C6 chassis) (2005-13)

Corvette (C5 chassis) (1997-2004)

#### DODGE

Viper

#### ELVA

Courier

#### FERRARI

355

360

Dino 206 & 246 (all)

F430 (all)

#### FORD

GT

#### GRIFFITH

(all)

#### LAMBORGHINI

Gallardo (all) (2003-11)

*Huracan (all) (2014-16)*

#### LOTUS

7 & 7A

Elan (RWD)

Elan M100 (FWD, all)

Europa (all)

Elise, Exige, & Exige S (2005-11)

Elite 2+2 & Elcat

Esprit (4-cyl, all)

Esprit (V8)

Evora & Evora S (2010-14)

#### McLAREN

*MP4-12C (all)*

#### MORGAN

V8 (all)

#### NISSAN

GT-R (R35)

#### PORSCHE

911 GT2 (996 & 997 chassis, all)

*911 GT3 (991 chassis, all)*

911 GT3 (996 & 997 chassis, all)

*911 Turbo & Turbo S (991 chassis) (2012-17)*

911 Turbo & Turbo S (996 & 997 chassis) (2001-12)

*Cayman GT4 (2016)*

#### TESLA

Roadster (2008-12)

#### TVR

4-cyl & 6-cyl (all)

V8 (all)

#### "CATCH-ALL":

Sports car over 2.0L not otherwise classified. (See Section 15.1.C for update/backdate limitations.)



**A STREET PREPARED (ASP)****ACURA**

NSX (1990-2005)

**AUDI**

A4 (2008-16)

S4 (2000-03)

S4 (2010-16) &amp; S5 (2013-16)

**BMW**

135 &amp; 1 Series M (2008-13)

328 &amp; 335 (2006-13)

M235i (2014-16)

Z4 sDrive35i &amp; sDrive35is (2012-13)

Z8

**BRICKLIN****CHEVROLET**

Camaro ZL1 (2012-13)

**DELOREAN****DEMASO**

Mangusta (all)

Pantera (all)

**DODGE**

Stealth Turbo

**FERRARI**

250 (non-LM)

275

308 Coupe &amp; Spider

330

365 Daytona GTB, GTC

348

**FORD**

Mustang Shelby GT350/GT350R (S550) (2015-16)

Mustang Shelby GT500 (S197) (2011-14)

**JAGUAR**

E-type (all)

**MAZDA**

RX-7 (1993-95)

**MERCEDES-BENZ**

CLK 320 &amp; CLK 32 AMG

E36 AMG (2010-16)

SLK55 AMG (R171 chassis) (2004-11)

**MITSUBISHI**

Lancer Evolution (VIII, IX) (2003-07)

Lancer Evolution (X) &amp; Ralliart (2008-13)

3000GT Turbo

**MITSUBISHI & EAGLE**

Eclipse Turbo &amp; Talon Turbo (1989-99)

**NISSAN**

370Z (all) (2009-13)

**PLYMOUTH**

Laser RS Turbo AWD (1992-94)

**PONTIAC & SATURN**

Solstice GXP &amp; Sky Redline

**PORSCHE**

911 Turbo (1976-89)

911 Turbo (964 chassis) (1990-94)

911 Turbo (993) (1996-97)

911 (996 &amp; 997 chassis) (1999-2012)

Boxster &amp; Cayman (981 chassis, all)

Boxster &amp; Cayman (987 chassis, all)

**SHELBY**

Cobra 289

**SUBARU**

Impreza WRX (incl. STI) (2002-14), Legacy (Turbo) (2004-14), &amp; Forester XT (2004-14)

Impreza WRX (incl. STI) (2015-16)

**SUNBEAM**

Tiger (260, 289)

**TOYOTA**

MR2 (all incl. Turbo) (1991-95)

Supra Turbo (1993½-98)

**VOLVO**

S60R &amp; V70R (2004-07)

**B STREET PREPARED (BSP)****AUDI**

TT (1.8T; FWD &amp; quattro)

TT (3.2L; quattro)

TTS (2009-13)

Quattro Turbo Coupe

**BMW**

128 (2008-11)

320i (F30 chassis) (2012-16)

M Coupe, M Roadster, & Z3 (6-cyl;  
all)

M3 (E36 chassis, all)

M3 (E46 chassis)

Z4 (non-turbo; all incl. M)

**CHEVROLET**

Corvette (1953-54)

Corvette (1955-57)

Corvette (1958-62)

Corvette (1963-67)

Corvette (1968-82)

Corvette (1984-96) (all)

**CHRYSLER**

Crossfire SRT6

**HONDA**

S2000

**MAZDA**

MazdaSpeed Miata

*MX-5 Miata (ND chassis, all)  
(2016-17)*

RX-7 Turbo (1986-92)

**NISSAN & DATSUN**

240Z, 260Z, &amp; 280Z

280ZX &amp; 280ZX Turbo

300ZX Turbo (1984-89)

300ZX Turbo (1990-96)

350Z (all)

**PONTIAC**

Fiero (V6)

Firebird Firehawk SLP (3rd gen,  
383cid) (1990-92)Firebird Firehawk SLP (4th gen,  
383cid) (1993-2002)**PORSCHE**

911 (non-turbo) (1965-89)

911 (964 &amp; 993)

911 (non-turbo, NOC)

914/6 (all)

924 (all incl. Turbo)

944 (all incl. Turbo)

928

968

*Boxster & Cayman (986 chassis,  
all)***SALEEN**

Mustang S281E &amp; Mustang (NOC)

**TRIUMPH**

TR-8

**VOLKSWAGEN**

Golf R (2012-13)

## **C STREET PREPARED (CSP)**

### **BMW**

Z3 (4-cyl)

M3 (E30 chassis)

### **DATSUN**

Roadster (1500, 1600, & 2000)

### **FIAT**

Abarth (*NOC*)

124 Spider (1975-78) & 2000

Spider (non-turbo)

2000 Spider Turbo

### **FORD**

Fiesta ST (2014-16)

### **HONDA**

Civic & CRX (1988-91)

### **LANCIA**

Scorpion

### **LOTUS**

Cortina

Elite (1216 cc)

### **MAZDA**

MX-5 Miata (1990-2005)

MX-5 (2006-13)

RX-2 & 616

RX-3, RX-3SP, & 808 Mizer

RX-7 (non-turbo) (1978-85)

RX-7 (non-turbo) (1986-92)

### **MERCEDES-BENZ**

190E (16v)

### **MORGAN**

4/4

### **PININFARINA**

2000

### **PONTIAC & SATURN**

Solstice & Sky

### **PORSCHE**

356 & 1600

924S & 944 (8v)

Carrera (4-cyl)

### **SCION & SUBARU**

FR-S & BRZ (2013-14)

### **TOYOTA**

MR-2 & MR-2 Supercharged (1st  
gen) (1985-89)

MR2 Spyder (2000-05)

### **"CATCH-ALL":**

Sedan over 1.7L & under 3.0L not  
otherwise classified.

Sports car under 2.0L not other-  
wise classified.

(See Section 15.1.C for update/  
backdate limitations.)

**D STREET PREPARED (DSP)****ACURA**

Integra (1990-93)  
 Integra (incl. Type R) (1994-01)  
 RSX (all)  
 TSX

**ALFA ROMEO**

GTV V6 (all)  
 Milano

**AUDI**

A3 (2005-13)  
 A4 (1.8T, FWD & quattro) (1995-01)  
 A4 (1.8T, FWD & quattro) (2002-05)  
 Coupe GT & Quattro (1980-88)

**BMW**

318 (16v) & 325 (E30 chassis)  
 323, 325, & 328 (E36 chassis)  
 323, 325, 328 & 330 (E46 chassis, non-M3)  
 3 Series (16v, NOC)  
 Bavaria

**CHEVROLET, PONTIAC, BUICK,****OLDSMOBILE, & GEO**

Cobalt SS (N/A) (2005-07)  
 Cobalt SS Supercharged (2005-07)  
 Cobalt SS Turbo (2008-10)  
 HHR SS Turbo  
 J Body (4-cyl Turbo, Quad 4 DOHC, & V6)  
 L Body (Quad 4 & V6)  
 N Body (4-cyl Turbo, Quad 4, & V6)  
 Spectrum Turbo (1985-89)  
 Storm GSi (1985-89)  
 X Body (V6)

**CHRYSLER, PLYMOUTH, & DODGE**

Acclaim (V6 & Turbo)  
 Charger GLH-S  
 Conquest & Starion (non-turbo)  
 Crossfire (non-SRT-6)  
 Daytona Turbo  
 Daytona (V6)  
 GLH-S & GLH Turbo  
 Laser Turbo (NOC) & K-car Turbo  
 Shadow (4-cyl Turbo & V6)  
 Shelby Charger Turbo  
 Spirit (4-cyl Turbo & V6)  
 SRT-4  
 Sundance Turbo

**DODGE & MITSUBISHI**

Colt Turbo & Mirage Turbo  
 (1984-88)  
 Colt Turbo & Mirage Turbo  
 (1989-92)

**EAGLE**

Summit Turbo (16v) (1989-90)

**FIAT**

500 Abarth (2012-13)

**FORD & MERCURY**

Capri (4-cyl & 6-cyl) (1971-77)  
 Capri (1991-95)  
 Contour SVT  
 Cougar (1999-2002)  
 Focus ST (2013-15)  
 Fusion & Milan (6-cyl) (2006-13)  
 Probe (Turbo & V6)

**HONDA**

Civic Si (1999-2000)  
 Civic Si (2002-05)  
 Civic Si (2006-12)  
 Del Sol (DOHC)  
 Prelude 4WS  
 Prelude (1992-2001) (NOC)

**HYUNDAI**

Tiburon

**ISUZU**

I-Mark LS (16v & Turbo, FWD) (1985-89)  
 I-Mark RS (16v & Turbo, FWD)  
 Impulse RS Turbo (AWD) (1990-93)  
 Impulse Turbo & RS (RWD) (1983-89)  
 Impulse XS (16v non-turbo) (1990-93)  
 Impulse (16v & Turbo)  
 Stylus XS & RS (16v) (1990-93)

**KIA**

Forte Koup (2010-12)

**LEXUS**

IS 300

**MASERATI**

BiTurbo

**MAZDA**

323 GT & GTX (AWD)  
 Mazda6 (6-cyl)  
 MazdaSpeed3  
 MazdaSpeed Protege  
 MX-6 (Turbo & V6)  
 RX-8

**DSP (CONTINUED)**

Spec Miata (See 15.0 for preparation allowance requirements)

**MERCEDES**

190 (all) (1984-93)

C230

**MERKUR**

XR4Ti

**MINI**

Cooper S (including JCW & JCW GP except Countryman)

**MITSUBISHI**

Cordia Turbo

Eclipse (2000-12)

Galant (all)

Tredia Turbo

**NISSAN & DATSUN**

200SX Turbo

200SX (V6)

240SX

Altima (2007-13)

Maxima

Pulsar (16v)

Pulsar NX Turbo

Sentra (2.0L) (2000-01)

Sentra (B15 chassis) (2002-06)

Sentra (B16 chassis) (2007-12)

**PEUGEOT**

505 (all) (1979-91)

**PONTIAC & TOYOTA**

Corolla XRS (2005-06), Matrix

XRS (2003-06), & Vibe GT (2003-06)

Matrix & Vibe (AWD) (2003-08)

**PORSCHE**

914 (4-cyl)

**RENAULT**

Fuego Turbo

R5 Turbo

**SAAB**

99, 99 EMS, & 99 Turbo

900 & 900 Turbo (1979-93)

900 & 900 Turbo (1994-98)

**SATURN**

Ion (all) & NOC

**SUBARU**

Impreza (all) (1993-2001)

Impreza (2.5L) (NOC)

Legacy & Outback (6-cyl, all) (1998-2004)

Legacy & Outback (6-cyl, all) (2005-13)

**TOYOTA**

Camry V6

Celica (2000-05)

Celica All-Trac (all)

Supra (1979-81)

Supra (1982-86)

**VOLKSWAGEN**

Golf, Jetta, & New Beetle (1.8T, Mk4 chassis) (1999-2005)

Golf, GTI, GLI, & Jetta (2.0T) (2006-13)

New Beetle Turbo

Passat VR6

R32

**VOLVO**

240 Series Turbo (all)

C30 (2006-09)

S40 (1995-2004)

S40 (2005-11)

**"CATCH-ALL":**

6-cyl (normally aspirated) or

4-cyl (mechanically forced induction) 2WD sedan under 3.0L not otherwise classified.

(See Section 15.1.C for update/backdate limitations.)

**E STREET PREPARED (ESP)****AMC**

AMX &amp; Javelin (all)

**AUDI**5000 Turbo, 5000 Turbo quattro,  
200, & 200 quattro

A8 &amp; A8 quattro

S4 &amp; RS4 (2004-09)

V8 quattro

**BMW**

2500 &amp; 2800 (all)

3.0S &amp; CS (all)

528, 530, &amp; 533 (non-turbo)

633i &amp; 733i (all)

M3 (2007-13)

**CHEVROLET, PONTIAC, BUICK, &****OLDSMOBILE**

Camaro &amp; Firebird (1967-70)

Camaro &amp; Firebird (1970½-81)

Camaro, Firebird, & Firehawk  
(1982-92) (3rd gen)Camaro, Firebird, SS, Firehawk, &  
WS6 (1993-2002) (4th gen)

Camaro (non-ZL1) (2010-15)

Chevelle (1964-67)

Chevelle (1968-72)

Corvair Yenko Stage I, II, &amp; III (all)

Lumina

Monza (V8) &amp; Skyhawk (V6)

Reatta

Regal (1980-88) (V6 &amp; V8, RWD)

Starfire &amp; Sunbird (V6, all)

Trans Am Turbo (1982-92)

**CHRYSLER, PLYMOUTH, & DODGE**Barracuda (1965-69) & Dart,  
Duster, & Valiant (1963-76)

(A-body)

Barracuda & Challenger (E-body)  
(1970-74)

Challenger (2008-13)

Challenger (6-cyl &amp; V8, NOC)

Charger (2006-13)

Conquest Turbo

Laser (Turbo, all) (1989-99)

Stealth (non-turbo)

Dakota (1997-04)

**FERRARI**

400 America (all)

500 Superfast (all)

**FORD & MERCURY**

Cougar (1965-70)

Cougar (1971-74)

Mustang (1964½ -66)

Mustang &amp; Cougar (1967-68)

Mustang &amp; Cougar (1969-70)

Mustang &amp; Cougar (1971-73)

Mustang II (all) (1974-78)

Mustang, SVO, Cobra, Cobra R  
(1979-93) & Capri (1979-86)  
(4-cyl Turbo, V6, & V8)Mustang (SN95 chassis, NOC  
including Cobra & Cobra R)  
(1994-2004)Mustang (S197 incl. Boss 302,  
Boss 302 Leguna Seca, & Shel-  
by GT500 2007-10) (2005-13)

Mustang (non-GT350) (2015-16)

Taurus SHO

Thunderbird &amp; Cougar (1983-88)

Thunderbird &amp; Cougar (1989-97)

**HYUNDAI**

Genesis (2009-12)

**INFINITI**

G35

G37

M30

Q45

**JAGUAR**

Sedans (6-cyl &amp; 12-cyl)

XJS (all)

XK 120, 140, 150, &amp; 160

**LEXUS**

ES 250

GS 400, LS 400, &amp; SC 400

**MAZDA**

929

MazdaSpeed6

**MERCEDES**

230SL, 250SL, &amp; 280SL (all)

350SL, 380SL, &amp; 450SL (all)

220, 230, 250, &amp; 280 Sedans (all)

280 (4.5L, all) & 300 (6.3, all)  
Sedans**MITSUBISHI**

3000 GT (non-turbo)

Starion Turbo

**NISSAN**

300ZX (non-turbo) (1984-89)

300ZX (non-turbo) (1990-96)

**PEUGEOT**

405

**SAAB**

SPG (16v &amp; Turbo)

**ESP (CONTINUED)****SALEEN**

Mustang 302 & 351 (non-super-charged) (1984-93)

**SHELBY**

GT350 (1965-66)

GT350 & GT500 (1967-70)

**SUBARU**

Forester 2.5XT

Legacy 2.5GT (2005-12)

**TOYOTA**

Supra (all) (1986½-92)

Supra (non-turbo) (1993-96)

**VOLVO**

700 Series (all)

800 Series (all)

S60 & V70

**VOLKSWAGEN**

Passat W8 4Motion

**"CATCH-ALL":**

American 6-cyl & V8 sedan or pick-up not otherwise classified.

Other sedan over 3.0L not otherwise classified.

(See Section 15.1.C for update/backdate limitations.)

**F STREET PREPARED (FSP)****ACURA**

Integra (1986-89)

Legend

**ALFA ROMEO**

1300 (all)

1600 (all)

1750 (all)

2000 (all)

Alfetta GT

**AMC**

(4-cyl, all)

**AUDI**

80 (all)

90 (all)

100LS (all)

4000 (all)

5000

**AUSTIN**

America (all)

Mini & Mini Cooper (850, 970, 997, 998, 1071, & 1275, all)

**AUSTIN-HEALEY**

Sprite (all)

100-4, 100-6, & 3000

**BMW**

1600

1800ti & 1800 TiSA

1600-2, 1602, & 2002 (+ tii)

318i (8v, E30 chassis)

318i & 318is (E36 chassis)

318ti (E36 chassis)

320i (E21 chassis) (1975-83)

**CHEVROLET, PONTIAC, BUICK,**

**OLDSMOBILE, GEO, & SUZUKI**

Beretta (4-cyl)

Camaro (4-cyl) (1982-86)

Cavalier (4-cyl OHV) (1992-2002)

Chevette & T1000

Citation & Omega

Corvair (non-Yenko)

Fiero (4-cyl)

Firebird (4-cyl) (1982-86)

Metro & Swift (1985-88)

Metro & Swift (1989-93)

Monza (NOC), Starfire, Omega,

Astre, & Skyhawk (RWD)

Phoenix & Skylark

Prism

S-10 (1994-2004)

Spectrum (1.5L non-turbo) (1985-89)

**FSP (CONTINUED)**

Spectrum (NOC)  
 Sprint & Sprint Turbo  
 Storm (all)  
 Sunbird (4-cyl)  
 Vega & Cosworth Vega  
**CHRYSLER, PLYMOUTH, & DODGE**  
 Acclaim (4-cyl non-turbo)  
 Arrow 1600, 2000, & 2600  
 Champ (non-turbo, all)  
 Colt (non-turbo, FWD)  
 Colt (8v non-turbo)  
 Colt (1600 & 2000, RWD)  
 Daytona (non-turbo)  
 Horizon, TC3, & Turismo (1.7L,  
 1.8L, & 2.2L)  
 Laser (non-turbo) (1989-99)  
 Neon (all) (1994-05)  
 Omni, 024, & Charger  
 Rampage (2.2L)  
 Sapporo (1600, 2000, & 2600)  
 Shelby (2.2L non-turbo) (1983-  
 84)  
 Spirit (4-cyl non-turbo)  
**DODGE, MITSUBISHI, & EAGLE**  
 Colt & Mirage (non-turbo) (1984-  
 88)  
 Colt, Mirage, & Summit (non-  
 turbo) (1989-92)  
 Colt, Mirage, & Summit (non-  
 turbo) (1993-96)  
**EAGLE**  
 Talon (non-turbo) (1989-99)  
**FIAT & BERTONE**  
 124 (1966-74)  
 128  
 131 & Brava  
 850 Sedan  
 850 Coupe & Spider  
 Strada  
 X1/9 (all)  
**FORD & MERCURY**  
 Capri II (1976-77)  
 Cortina  
 Escort, EXP, Lynx, & LN7 (1981-  
 90)  
 Escort, Escort GT, & Tracer  
 (1991-96)  
 Escort, ZX2, & Tracer (1997-  
 2002)  
 Festiva  
 Fiesta (1976-80)  
 Focus (all) (1999-2007)

Fusion & Milan (4-cyl)  
 Mustang II (4-cyl) (1974-78)  
 Mustang & Capri (4-cyl non-  
 turbo)  
 Pinto & Bobcat (4-cyl)  
 Pinto Wagon (2000, 2300, &  
 2600)  
 Probe (4-cyl non-turbo)  
**HONDA**  
 Accord (1976-81)  
 Accord (1982-12)  
 Civic (1973-79)  
 Civic (1980-83)  
 Civic & CRX (all) (1984-87)  
 Civic (1992-95) & Del Sol (1992-  
 97) (SOHC)  
 Civic (non-Si) (1996-2000)  
 Civic (non-Si) (2001-05)  
 Civic (non-Si) (2006-12)  
 Fit  
 Prelude (1979-82)  
 Prelude (1983-87)  
 Prelude (1988-91)  
**HYUNDAI**  
 Elantra  
 Excel  
 Scoupe  
 NOC (all)  
**INFINITI**  
 G20  
**ISUZU**  
 I-Mark (1.5L non-turbo)  
 FWD models (1985-89)  
 I-Mark RS (16v) (1985-89)  
 I-Mark (RWD) (1980-85)  
 Impulse (non-turbo) (1983-89)  
 Stylus S (12v) (1990-93)  
**JENSEN-HEALEY**  
**KIA**  
 Spectra (1.8L 4-cyl)  
**LANCIA**  
 Beta & Zagato (1975-83)  
**MAZDA**  
 Mazda2  
 Mazda3  
 323 (non-turbo) (1986-89)  
 323, MX-3 (4-cyl) & Protégé  
 (1990-94)  
 626 (FWD, all)  
 626 (RWD, all)  
 Cosmo (all)  
 GLC (FWD, all)



**FSP (CONTINUED)**

GLC (RWD, all)  
 MX-6 (4-cyl non-turbo)  
 Protégé (1995-98)  
 Protégé (1999-2003)  
 R-100  
 RX-4

**MG**  
 1100, 1300 Sedan (all)  
 A (all)  
 B & B GT (all)  
 C & C GT (all)  
 Midget (948, 1098, 1275, & 1500;  
 all)

**MINI**  
 Cooper (non-S) (2002-13)

**MITSUBISHI**  
 Cordia (non-turbo)  
 Eclipse (1989-99) (non-turbo)  
 Lancer (non-turbo)  
 Mirage (1997-2002) (non-turbo)  
 Tredia (non-turbo)

**MORGAN**  
 +4 (2138 cc; all)

**NISSAN & DATSUN**  
 1200  
 200SX (1976-79)  
 200SX (1980-83)  
 200SX (1984-88)  
 200SX SE-R  
 210  
 310  
 510 (1968-73)  
 510 (1978-81)  
 610  
 710  
 B210  
 F-10  
 NX1600  
 NX2000, Pulsar, Sentra, & Sentra  
 SE-R (1991-94)  
 Pulsar & Pulsar NX (non-turbo,  
 all)  
 Sentra (1.8L) (2000-06)  
 Sentra (2.0L) (1995-99)  
 Stanza (all)  
 Versa (2007-16)

**OPEL**  
 1900 & Manta  
 GT 1100  
 GT 1500 & 1900  
 Kadett 1100  
 Kadett 1500 & 1900

**PONTIAC & TOYOTA**  
 Corolla, Matrix, & Vibe (2003-08)  
 (NOC)

**PEUGEOT**  
 405 DL & 405 S

**PORSCHE**  
 912  
 912E  
 924 (Audi engine)

**RENAULT**  
 15 & 17 (all)  
 16 (all)  
 17 Gordini  
 18i (all)  
 Alliance, GTA & Encore  
 Fuego (non-turbo)  
 R-5 (NOC) & LeCar

**SAAB**  
 Sonnet (1968-74)

**SATURN**  
 SL (1991-95), SW (1993-95), &  
 SC (1991-96)  
 SL (1996-99), SW (1996-99), &  
 SC (1997-2000)  
 SL (2000-02), SW (2000-02), &  
 SC (2001-02)

**SCION**  
 tC

**SUNBEAM**  
 Alpine (all)

**SUBARU**  
 Turbo 4WD (all, NOC)  
 Forester (non-turbo)  
 Impreza 2.0i (2012-13)  
 Legacy & Legacy GT

**SUZUKI**  
 Aerio

**TOYOTA**  
 Camry (4-cyl)  
 Celica (1970-77)  
 Celica (1978-81)  
 Celica (1982-85)  
 Celica (FWD) (1986-89)  
 Celica (FWD) (1990-93)  
 Celica (1994-99)  
 Corolla 1200  
 Corolla (1600 & SR-5) (1970-79)  
 Corolla (1600 & 1800, RWD)  
 (1980-83)  
 Corolla (AE86 chassis, all) (1984-  
 87)  
 Corolla FX16

**FSP (CONTINUED)**

Corolla GTS (AE92 chassis, FWD)  
(1990-91)

Starlet

Tercel

Yaris

**TRIUMPH**

GT-6

Herald (all)

Spitfire

TR-2 & TR-3

TR-4 & TR-4A

TR-250 & TR-6

TR-7

**VOLKSWAGEN**

Beetle (RWD)

Cabriolet (1985-92)

Corrado (all)

Dasher & Quantum (4-cyl, all)

Fox GL

Golf & Jetta (all, A2 chassis)  
(1985-93)

Golf, Jetta, & Cabrio (8v, A3 chassis)  
(1993-98)

Golf & Jetta (VR6, A3 chassis)

Golf & Jetta (VR6, NOC, A4 chassis)

Golf, Jetta, & Beetle TDI

Karmann Ghia

Passat (all, NOC)

Rabbit, Jetta, Scirocco, Cabriolet, & Pickup (all, A1 chassis)  
(1975-92)

Rabbit (2.5L 5-cyl, A5 chassis)  
(2006-09)

**VOLVO**

120 Series (all)

140 Series (all)

160 Series (all)

1800, P1800, & ES1800 (all)

240 Series (non-turbo, all)

260 Series (all)

700 Series (all)

**YUGO****“CATCH-ALL”:**

Sedan under 1.7L not otherwise  
classified

4-cyl or rotary RWD mini-pickup  
(See Section 15.1.C for update/  
backdate limitations.)

# TIRE RACK<sup>®</sup>.com



- Pro-Kit Springs
- Pro-Dampers
- Sportline Springs
- Anti-Roll Kits
- Pro-Control Bars & Chassis Reinforcements



- Race Springs
- Sport Springs
- O.E. Sport Springs



## SPORT SHOCKS

Adjustable shocks for sporting drivers.

## STR.T SHOCKS

An excellent O.E. replacement that offers additional stability, control and handling without a harsh ride.

Also Available: *Threaded Suspension Kits*



## B8 SHOCKS

Also Available: *B6 Series Shocks, B16 (PSS9) and B16 (PSS10) Coil-Over Kits*



## VARIANT 3 COIL-OVER

- Independent adjustable compression and rebound damping
- Patented system has dual-level valves for damping adjustments

## CLUBSPORT KIT COIL-OVER

- For the race track and the road
- Independently adjustable compression and rebound
- Includes high performance racing springs



- AGX Shocks
- Strut-Plus Assembly
- GR-2/Excel-G Shocks and Struts
- MonoMax Shocks and More!



## COIL-OVER

Properly lower your vehicle while offering an improved ride, handling and performance.



## ROLLING TIRE STORAGE RACK

stores and moves up to 8 passenger or light truck/SUV tires. High quality, 5" caster wheels for smooth rolling even when loaded.

Other products shown not included



\$299

## FREE SHIPPING

For all brakes, suspension and other parts and accessories on all orders over \$50. Visit [www.tirerack.com/freeshipping](http://www.tirerack.com/freeshipping) for details.

## STREET MODIFIED CATEGORY

### ENGINE CLASSIFICATIONS

1. 4-stroke cycle and 2-stroke cycle naturally aspirated internal combustion engines will be classified on the basis of actual piston displacement.
2. Supercharged/turbocharged SM and SSM engines will be classified on a basis of adding 1.4L to the actual displacement. Forced induction SMF engines will add 1.0L to the actual displacement.
3. Rotary Engines (Wankel) – These units will be classified on the basis of a piston displacement equivalent to 0.9 liters times the number of rotors, plus the volume determined by the difference between the maximum and minimum capacity of the working chamber times the number of rotors.
4. Electric Motors – Cars with electric motors, in whole or part of the drivetrain, will run at class maximum weight (2900 lbs. for SSM, 3100 lbs for SM/SMF). Category weight adjustments (e.g., tire size) are allowed.

### WEIGHT ADJUSTMENTS

Cars running tires with a rated width of 275 mm or less on all four wheels may compete at a minimum weight 200 lbs. less than their calculated weight.

## SUPER STREET MODIFIED CLASS (SSM)

### ELIGIBLE VEHICLES:

- All 2-seat cars not excluded below
- All SM/SMF eligible sedans/coupes and those excluded from SM for failure to meet weight requirements.
- All SM eligible vehicles
- *McLaren MP4-12C*
- Porsche *GT3 (991)* and Carrera GT

### EXCLUDED VEHICLES:

- Lotus (all except Elise, Exige, & Esprit)
- All 2-seat cars not eligible for Street Prepared Category
- All vehicles not meeting specifications to have been delivered in the US

### MINIMUM WEIGHT CALCULATIONS WITHOUT DRIVER (LBS.):

- FWD..... 1350 + 125 per liter
- RWD ..... 1600 + 200 per liter
- AWD ..... 1600 + 300 per liter
- Supercharged/Turbocharged SSM engines – Add 1.4L to the actual displacement
- Rear wheel weight greater than 51%.....+25 per liter
- Tire width 275 mm or less.....-200
- Regardless of the weight formulas above, no car will be required to weigh more than 2900.

**STREET MODIFIED CLASS (SM)****ELIGIBLE VEHICLES:**

All sedans/coupes (models which were originally equipped with a minimum of four seats and four factory seat belts), all FWD (front-wheel-drive) cars, and pickup trucks (in compliance with Section 3.1 using SM allowances and minimum weight calculation).

**SAMPLE VEHICLES:**

- CHRYSLER: Neon, Stratus/Breeze
- FORD: Contour, Escort, Probe, Mustang
- GENERAL MOTORS: Cavalier, Sunfire, Camaro
- HONDA: Civic, Accord, Integra
- HYUNDAI: Elantra, Tiburon
- MAZDA: Protege, MX-6, 626
- NISSAN: Altima, Sentra
- TOYOTA: Celica, Corolla, Camry
- VOLKSWAGEN: Golf, Jetta

**EXCLUDED VEHICLES:**

- Porsche (all)
- JDM-spec cars
- Lotus (all)
- MGB GT
- Triumph (all)

**MINIMUM WEIGHT CALCULATIONS WITHOUT DRIVER (LBS.):**

- FWD..... 1550 + 125 per liter
- RWD ..... 1800 + 200 per liter
- AWD ..... 1800 + 300 per liter
- Supercharged/Turbocharged SM engines – Add 1.4L to the actual displacement.
- Rear wheel weight greater than 51%.....+25 per liter
- Solid axle RWD .....-25 per liter
- Tire width 275 mm or less .....-200
- Regardless of the weight formulas above, no car will be required to weigh more than 3100.

**STREET MODIFIED FRONT-WHEEL-DRIVE CLASS (SMF)****ELIGIBLE VEHICLES:**

- All FWD vehicles

**MINIMUM WEIGHT CALCULATIONS WITHOUT DRIVER (LBS.):**

- All ..... 1750 + 125 per liter
- Supercharged/Turbocharged SMF engines – Add 1.0L to the actual displacement.
- Regardless of the weight formulas above, no car will be required to weigh more than 3100 lbs.
- Cars running in SMF using tires with a nominal width of 275 mm or less will NOT receive the weight adjustment as stated in the SM class.

## PREPARED CATEGORY

### X PREPARED (XP)

XP vehicles must conform to the rules in Section 17 except as noted herein. This class is for almost any production car using almost any automobile drivetrain. Any vehicle meeting the requirements of Section 17.A.2, listed in another Prepared class, specifically listed in CP, DP, EP, or FP that is not required to run at Section 17.11.A specified weights or listed at the end, is eligible for XP. Section 17.11.A does not apply. "In-excess" cars per Section 17.11.A are not eligible for XP.

#### 1. BODYWORK AND STRUCTURE

- a. Chassis components attached by removable fasteners (e.g., bolt-on sub-frames) may be modified or replaced without penalty.
- b. Front hoods, engine covers, trunk lids, hatches, front fenders, rear fenders not part of chassis structure (unibody), front & rear fascias, and side skirts may be modified or replaced, and may be attached with removable fasteners. Associated hardware, including latches and hinges, may be modified, removed, or replaced. Fenders may be flared as per Section 17.2. Unibody fender may be replaced as described in Section 17.2.S. Non-metallic fender liners may be modified, replaced, or removed. Body panels may be attached with removable fasteners (e.g., Dzus®).
- c. Aerodynamic Aids – Wings may be added, removed, or modified. Non-OE wings may only be attached to the rear deck/hatch area behind the centerline of the rear axle. The total combined surface area of all wings shall not exceed 8 sq. ft. (0.7432 m<sup>2</sup>) as calculated per Section 12.9. The number of wing elements is limited to 2. Wings designed to be adjustable while the car is in motion must be locked in a single position. *Spoilers under 17.2.P and rear wings are mutually exclusive such that a builder may use one or the other, but not both.*

Wings, and any component thereof, may not extend beyond the vehicle width as defined by the outermost portion of the vehicle doors, less mirrors, door handles, rub strips, and trim. In addition, no portion of the wing or its components may be more than 6" (15.24 cm) forward of the rear axle, more than 0" (0.0 mm) beyond the rearmost portion of the bodywork, or more than 6" (15.24 cm) above the roofline of the vehicle, regardless of body style. Reinforcements to the wing mounting area may be used, but may serve no other purpose.

Wing endplate surface area is limited to 200 sq. in. (1290.3 cm<sup>2</sup>) each and the number of endplates is limited to a maximum of 2. For convertibles/roadsters with no roof and targas with no rear window, no portion of the wing may be higher than 12" (30.48 cm) above the wing's point of attachment to the body of the vehicle. In the event that a convertible/roadster with no roof or a targa-top with no rear window retains the OE windshield frame with a windshield of any material that meets Section 17.2.K.1, the top of the windshield frame shall be considered the top of the roofline and the car may use the wing mounting rules in Appendix A.1.c for a closed car.

Canards are allowed and may extend a maximum of 6" (15.24 cm) forward of front bodywork/fascia as viewed from above. No portion of the

**XP (CONTINUED)**

canard may extend past the widest part of the front bodywork/fascia as viewed from above. Canard area will be measured in the same manner as wings using Section 12.10. Canard area may not exceed 1.2 sq. ft. (1114.8 cm<sup>2</sup>).

Front splitters are allowed and shall be installed parallel to the ground (within  $\pm 3^\circ$  fore and aft) and may extend a maximum of 6" (15.24 cm) forward of the front bodywork/fascia as viewed from above. Splitters may not extend rearward past the centerline of the front wheels. No portion of the splitter may extend beyond the widest part of the front bumper as viewed from above.

*The splitter and canards may have endplates. The endplates may connect the splitter and the canard. The splitter and canard endplate total surface area is limited to 100 sq. in. (645.2 cm<sup>2</sup>) for each side.*

- d. Steering wheel, pedals, and driver's seat must be completely to the left or right of vehicle centerline.
- e. Exhaust may exit through the bodywork. Rocker panels may be modified for exhaust routing.
- f. The transmission tunnel/cover may be altered to allow the installation of an alternate transmission and/or driveshaft. Cars originally equipped with a removable transmission tunnel/cover may substitute a tunnel/cover of an alternate material.
- g. The shift lever opening in the body of the car may be altered to allow the installation of alternate shift linkage.
- h. Non-OE replacement bodies are allowable for the Factory Five Roadster/Challenge Car and Superformance MKIII. Replacement bodies must not confuse the identity of the vehicle.
- i. Minimum track width is 55" (139.7 cm).

**2. WHEELS**

Any size wheel may be used. Wheel size does not affect minimum weight.

**3. SHOCK ABSORBERS AND SPRINGS**

- a. Section 17.5.B, which restricts the type of shocks authorized by 17.5.C.3, does not apply.
- b. Active/reactive suspension systems incur a minimum weight adjustment, including standard parts.

**4. BRAKES**

Anti-lock braking systems (ABS) may be added, replaced, removed, or modified. The use of ABS including original equipment incurs an ABS weight adjustment. ABS providing traction and/or stability control in any form will also incur a traction/stability control weight adjustment.

**5. SUSPENSION CONTROL**

Any front and rear suspension system type (MacPherson/Chapman strut, double A-arm, live axle, etc.) may be used.

**6. ELECTRICAL SYSTEM**

Any ignition system is permitted. The number of spark plugs may be changed.

**XP (CONTINUED)****7. ENGINE AND DRIVETRAIN**

- a. Engines must be derived from production automobiles. Motorcycle, snowmobile, marine, or other engines of non-automobile design are not permitted.
- b. Drivetrain and related systems (e.g., induction, ignition, fuel, electrical, cooling, oiling) and components (e.g., mounts, clutch, flywheel) are unrestricted except as noted.
- c. The engine orientation (transverse stays transverse and longitudinal stays longitudinal) and the engine bay location must not be changed (front-engine stays front-engine, mid-engine stays mid-engine, and rear-engine stays rear-engine).
- d. Any traction or stability control systems are permitted, but incur a minimum weight adjustment, including standard parts.
- e. Air may be ducted to the induction system. Openings in the bodywork to allow air to be ducted are allowed provided they serve no other purpose.

**8. OTHER**

Vehicles exceeding these rules and prepared to the Club Racing General Competition Rules (GCR) are not eligible for this class.

**9. MINIMUM WEIGHTS****a. ENGINE CLASSIFICATIONS**

1. 4-stroke cycle and 2-stroke cycle, naturally aspirated, internal combustion engines will be classified on the basis of actual piston displacement.
2. Turbocharged or supercharged versions of all engines will be classified on a basis of 1.4 times the actual displacement.
3. Rotary Engines (Wankel): These units will be classified on the basis of a piston displacement equivalent to twice the volume determined by the difference between the maximum and minimum capacity of the working chamber, times the number of rotors.

**b. MINIMUM WEIGHT CALCULATIONS**

All listed weights are without driver. All weights are calculated based on displacement as listed above. EXAMPLE: Weight for a RWD car w/ 1796 cc Turbo engine behind the driver is  $1200 + [(1.796 \times 1.4) \times (200 + 20)] = 1753$  lbs.

**ENGINE DISPLACEMENT LESS THAN 4.0L (LBS.)**

FWD.....	1200 + 150 per liter
RWD .....	1200 + 200 per liter
AWD .....	1200 + 250 per liter

**ENGINE DISPLACEMENT OF 4.0L OR GREATER (LBS.)**

FWD.....	1200 + 130 per liter
RWD .....	1200 + 180 per liter
AWD .....	1200 + 250 per liter

Regardless of the weight formulas above, no car shall be required



## XP (CONTINUED)

to weigh more than 2300 lbs. before applicable weight adjustments.

### WEIGHT ADJUSTMENTS (LBS.)

ABS (anti-lock braking system)..... add 50

TSC (traction/stability control) ..... add 50

Active/reactive suspension.....add 100

Engine behind driver ..... add 20 per liter

c. Regardless of the Minimum Weight Calculations above (b), no car with a supercharged or turbocharged engine shall weigh less than the following minimum weights (lbs.):

FWD.....1575

RWD .....1700

AWD .....1825

### FACTORY FIVE

Roadster & Challenge Car

Type 65 Coupe

All with a minimum engine size of 4.5L normally aspirated or the equivalent forced induction engine size and weight.

### MOSLER

MT900S

MT900R XP

All with a minimum engine size of 6.0L normally aspirated or the equivalent forced induction engine size and weight.

### NOBLE

M12

M12GTO

M400

All with minimum engine size 2.9L with forced induction or 4.1L normally aspirated.

### ROSSION

Q1

All with minimum engine size 2.9L with forced induction or 4.1L normally aspirated.

### SHELBY

Cobra (1963-67)

### SUPERFORMANCE

MKIII

GT40 MKII

Shelby Cobra Daytona Coupe

All with a minimum engine size of 4.5 L normally aspirated or the equivalent forced induction engine size and weight.

### TVR

Griffith Series 200 & Series 400

## C PREPARED (CP)

Unless otherwise listed, the minimum weights will be determined from the following tables according to engine type and displacement.

Minimum weight is based on actual engine displacement. The block may be bored and/or sleeved to achieve allowed displacement.

Engine Coolant flow direction is unrestricted.

US-produced 4-cyl, 6-cyl, and 8-cyl engines are allowed alternate-stroke crankshafts; crank angles must remain standard.

Naturally aspirated cars using US-market 6-cyl and 8-cyl engines manufactured by a particular corporation may use any naturally aspirated 6-cyl or 8-cyl engine offered in a US-market vehicle by that corporation's brands as listed below:

- Ford: Ford, Mercury, and Lincoln
- General Motors: Chevrolet, Pontiac, Oldsmobile, GMC, and Buick
- Chrysler: Chrysler, Dodge, and Plymouth

Alternate engines for a particular model must locate the bell housing to the block mounting surface in the same plane as the standard part. Vertical position of the longitudinal axis of the crankshaft shall remain the same as the original engine. Tolerance for both measurements is  $\pm\frac{1}{2}"$  ( $\pm 12.7$  mm). Alternate material (e.g., aluminum) engine blocks may be used on US-produced 8-cyl engines. Any alternate engine block shall meet all other requirements of Section 17.

Forced induction cars may not substitute the engine for any other nor may forced induction engines be swapped into cars that the combination was not offered.

Engine displacement changes are allowed.

Alternate iron or aluminum cylinder heads may be used on US-produced 4-cyl, 6-cyl, and 8-cyl engines. Any alternate cylinder head(s) shall be of the same configuration (number of valves per cylinder and valve actuation method - e.g., OHV or OHC) as the original and shall be direct replacement type.

The floor in the driver/passenger compartment may be replaced but must maintain the basic shape and position of the original floor (i.e., flat and horizontal, relative to the car and rocker panels). It may not be curved, angled, recessed, or channeled between the rockers and may be made of steel and/or aluminum only. Replacement floors may be modified per Section 17.2.E.

The firewall between the engine compartment and driver/passenger compartment may be replaced but must be in approximately the same location as the original and must create a sealed bulkhead between engine and driver/passenger. Replacement firewalls may be made of steel and/or aluminum only and may be modified per Section 17.2.F.

An alternate hood is allowed which has a bulge no more than 4" (10.16 cm), measured off of the original base model hood, for induction clearance. The bulge may open to the front, to the rear, or to either or both sides. If the original base model hood has a 2" (50.8 mm) bulge, then an addition of 2" (50.8

**CP (CONTINUED)**

mm) is allowed, if the base model has a 3" (76.2 mm) bulge, then 1" (25.4 mm) is allowed, etc.

Traction control/stability control may not be added to a car which was not equipped with an OE traction/stability control system. OE systems may be retained, but may not be replaced or modified in any way other than removal. The following weights apply unless a specific weight is indicated with the model listing.

Minimum weight (lbs.):

V8 engines greater than 5100 cc .....	3000
V8 engines equal to or less than 5100 cc .....	2700
6-cyl engines, maximum 4500 cc .....	2450
Turbocharged 6-cyl engines, maximum 4500 cc .....	2550
Turbocharged 4-cyl engines .....	2450
Maximum weight on the rear of the car shall be 51% of the total weight of the car. EXCEPTIONS: Corvair, Yenko Stinger.	

Wheels may be replaced with a wheel having any diameter and any width without weight adjustments.

**AMC**

AMX (1968-70)  
Gremlin (8-cyl) (1970-78)  
Javelin (1968-74)  
Spirit (8-cyl) (1979-83)

**CHEVROLET**

Camaro (1967-69)  
Camaro (1970-81)  
Camaro (1982-92)  
Camaro (1993-02)  
Corvair & Corvair Turbo (1960-64); weight (lbs.): .....1850  
Corvair & Corvair Turbo (1965-69); weight (lbs.): .....1850  
Monza (1975-80)

**CHRYSLER, DODGE & PLYMOUTH**

300 (all) (2006-17)  
A-body – Valiant, Dart, Duster, Demon, etc., (1963-67), & Barracuda (1965-69)  
Dakota 2WD (1987-96)  
Dakota 2WD (1997-2004)  
Challenger (non-supercharged) (2008-17)  
Charger (non-supercharged) (2006-17)  
E-body – Barracuda & Challenger (1970-74)

**FORD & MERCURY**

Maverick & Comet (6-cyl & 8cyl) (1970-77)  
Mustang (6-cyl & 8-cyl) (1964-69)  
Mustang (6-cyl & 8-cyl) (1969-73)  
Mustang II (6-cyl & 8-cyl) (1974-78)  
Mustang (6-cyl & 8-cyl) (1979-93)  
Mustang Turbo & SV0 (4-cyl) (1979-93)

**CP (CONTINUED)**

Mustang (w/o IRS) (1994-04)

Air may be ducted to the intake airbox through an opening in the back of the hood, rectangular in shape, maximum width of 20", maximum length 3.5". Opening may extend 1" into the windshield.

Mustang (S197 chassis, non-supercharged) (2005-14)

Thunderbird (V6 & TurboCoupe) (1983-88)

Thunderbird (V6 & SuperCoupe) (1989-97)

**GENERAL MOTORS**

Chevelle, El Camino, Tempest, etc. (A-body) (1964-67)

Chevelle, Cutlass, El Camino, GTO, etc. (A-body) (1968-72)

LeMans, Cutlass, Chevelle, El Camino, etc. (A-Body) (1973-77)

Malibu, Cutlass, El Camino, etc. (A-body) (1978-81)

Monte Carlo, Grand Prix, Regal, El Camino, etc. (A-body)(1982-88)

S10, S15, & Sonoma (6-cyl) (1982-93)

S10 & Sonoma (6-cyl) (1994-04)

**MERCURY**

Capri (6-cyl & 8-cyl) (1979-93)

Capri Turbo (4-cyl) (1979-93)

Comet (6-cyl & 8-cyl) (1971-77)

**MERKUR**

XR4Ti (1985-88)

**PONTIAC**

Firebird & TransAm (1967-69)

Firebird & TransAm (1970-81)

Firebird & TransAm (1982-92)

Firebird & TransAm (1993-2002)

Trans-Am Turbo (1989)

GTO (2004-06)

**SALEEN**

Mustang (w/o IRS or forced induction) (1979-93)

**SHELBY**

GT350 & GT500 (1965-70)

**YENKO**

Stinger (1965-69); weight (lbs.): ..... 1850

**"CATCH-ALL":**

US Sedan (6-cyl or 8-cyl, NOC)

**D PREPARED (DP)**

Weights are determined by the following formulas. Wheel sizes, valve sizes, and track dimensions are as per Section 17.

Minimum weights are determined by engine displacement. Increases in engine displacement resulting from legal overbore are not considered in these calculations.

Wheels up to 10" wide are allowed with no weight increase; a maximum of 12" is permitted.

**WEIGHT FORMULAS (LBS):**

Engines with 3 or 4 valves per cylinder and displacement less than or equal to 1667 cc:.....1.06 x displacement (cc)

Engines with 3 or 4 valves per cylinder and displacement greater than 1667 cc: .....0.91 x displacement (cc) + 250 lbs.

Engines with 2-valves per cylinder:..... 1.00 x listed displacement (cc)

Engines with 2-valves per cylinder are permitted a displacement change of +10% via bore/stroke changes only and with the weight formula accounting for the increased displacement.

**WEIGHT ADJUSTMENTS (LBS):**

Solid Axle: .....-50

Wheels greater than 10" wide up to 12" wide: .....+100

**ALFA ROMEO**

1600 GTV (1974)

Alfetta GT (1976-79)

Alternate cylinder head: 19510.01053.04.

Giuletta Sprint & Spider (1570 cc)

Giulia 1300 & 1300 Ti (1964-71)

GT 1300 Jr & GTA Jr (1966-77)

GTA (bore & stroke: 78 mm x 67.5 mm)

GTV 1750, 2000 (1967-77)

Alternate cylinder head: 19510.01053.04 (twin plug): +100 lbs.

Junior Z

Spider Duetto 1750 Spider Veloce (1779 cc) (1969-70)

Alternate body part: Niki Lauda Edition Spoiler

Spider 2000 & Spider 2000 Veloce (1962 cc) (1971-76)

Alternate body part: Niki Lauda Edition spoiler

Sport Sedan

Alternate cylinder head: 19510.01053.04 (twin plug): +100 lbs.

Sedan or sports car (RWD, NOC)

**ALPINE**

A108

A110 1100

**AUSTIN-HEALEY & MG**

100-4 (2660 cc)

Alternate part: louvered hood

MGA Twin Cam

Replace wood floorboards with metal

MGA

Replace wood floorboards with metal

MGB & MGB-GT

Sprite/Midget

**DP (CONTINUED)****BMW**

1600 (1966-77)  
 2002, 2002ti, & 2002tii (1968-76)  
 2000ti (1966-72)  
 320i  
 3 Series E21 (4-cyl) (1975-83)  
 3 Series E30 (4-cyl) (1984-93)  
 3 Series & M3 (8v & 16v, E30 chassis)  
 530i (1975-78)  
 Z3 (4-cyl)  
 Sedan (RWD, NOC)

**CHEVROLET**

Vega & Cosworth Vega (1971-77)

**DATSUN**

1500 (SPL 310), 1600 (SPL 311/311U), & 2000 (SRL 311) Roadster

**DODGE & PLYMOUTH**

Colt & Champ (1971-78)

**ELVA**

Courier (1600, 1800)  
 ATB 7224 MGA axle housing assembly

**FIAT & BERTONE**

124 Spider (1600, 2000) & 124 Spider Abarth (1995 cc)  
 124 Coupe & Sedan (1966-74)  
 124 Sport Coupe (1592 & 1608 cc)  
 131 & Brava (1974-84)  
 850 (all, including Abarth)  
 X1/9

**FORD & MERCURY**

Anglia Super (1962-67)  
 Capri (non-US) (1969-77)  
 Alternate 2.3L cylinder head: SVO M-6049-A230  
 Cortina (1964-68)  
 Escort Mexico  
 Escort Super & 1300 GT  
 Mustang II (2.3L) (1974-78)  
 Alternate 2.3L cylinder head: SVO M-6049-A230  
 Mustang & Capri (4-cyl non-turbo) (1979-93)  
 Alternate 2.3L cylinder head: SVO M-6049-A230  
 Pinto (1971-80)  
 Alternate 2.3L cylinder head: SVO M-6049-A230  
 Alternate body parts: spoiler D9FZ6440555-A; end piece D9FZ6428010-A or D9FZ6428011-A

**ISUZU**

I-Mark (1981-84)  
 Impulse (non-turbo) (1983-89)

**JENSEN**

Jensen-Healey (1973 cc)  
 Alternate Parts: cast iron sleeves

**LANCIA**

Scorpion (1756 cc) (1976)  
 Fabric roof panel may be replaced with alternate materials.

## DP (CONTINUED)

### LOTUS

7 & 7A (948, 997, & 1098 cc)

Elan

Alternate cylinder head: 26RD0703

Super 7 (1340 cc & 1498 cc)

Europa (Renault 1470 cc/1565 cc & Lotus-Ford Twin Cam 1558 cc)

Alternate cylinder head (Renault): casting R-16 Renault

Alternate cylinder head (Twin cam): 26RD0703

### MAZDA

626 (RWD)

Cosmo (1976-78)

Alternate cylinder head: #E515-10-100B

GLC (RWD) (1977-83)

Alternate cylinder head: E515-10-100B

MX-5 Miata (1.6L & 1.8L, non-turbo) (1990-2005)

MX-5 Miata (2006-15)

*MX-5 Miata (2016-17)*

### MERCEDES

190E (1983-93)

### MORGAN

4/4 MkIV (2138 cc)

Replace wood floorboards with metal

4/4 MkV (2138 cc)

Replace wood floorboards with metal

### NISSAN & DATSUN

200SX (S10 chassis) (1977-79)

Alternate cylinder head: 11041-22010, 11041-U0600-A, 11041-U0602-SV, 11041-21901, or 11041-N7120

200SX (S110 chassis) (1980-83)

Alternate cylinder head: 11041-22010, 11041-U0600-A, 11041-U0602-SV, 1041-21901, or 11041-N7120

Alternate engine: L20B or NAPS-Z

200SX (S12 chassis) (1984-88)

Alternate cylinder head: 11041-N7120.

Engine: L20B or NAPS-Z

210 (1397 & 1488 cc) (1979-82)

210 (B310 chassis; 1.4 L) (1978-82)

Alternate cylinder head: 11041-H2303 or 11041-H5704

240SX (1989-98)

Alternate engine: L20B with cylinder head 11041-N7120/22010 or 11041-V9182/U0600A

Hood may be modified for engine clearance.

510 (PL510) (1595 cc)

510 (PL510 chassis; 1.6 L, 1.8 L, & 2.0 L) (1968-73)

Alternate cylinder head: 11041-22010, 11041-U0600-A, 11041-U0602-SV, 11041-21901, or 11041-N7120

510 (A10 chassis) (1979-81)

Alternate cylinder head: 11041-22010, 11041-U0600-A, 11041-U0602-SV, 11041-21901, or 11041-N7120

610 (1973-76)

Alternate cylinder head: 11041-22010, 11041-U0600-A, 11041-U0602-SV, 11041-21901, or 11041-N7120

**DP (CONTINUED)**

710 (1974-77)

Alternate cylinder head: 11041-22010, 11041-U0600-A, 11041-U0602-SV, 11041-21901, or 11041-N7120

720 (2WD) (1980-86)

810 (1976-80)

810 Maxima (1981-83)

B110 (1171, 1237, 1288, 1397, &amp; 1488 cc) (1970-73)

B210 (1171, 1237, 1288, 1397, &amp; 1488 cc) (1974-78)

Alternate cylinder head: 11041-H2300, 11041-25720, 11041-H1001, 11041-18001, 11041-H2303, 11041-H5704, or 11041-H9204

**OPEL**

Ascona &amp; Ascona SportWagon (1900 cc) (1971-75)

GT 1900

GT 1100

Kadett (1100 &amp; 1900 cc) (1964-72)

Manta Sport Coupe &amp; Manta Rallye (1900 cc) (1971-75)

**PONTIAC**

Fiero (2.5L, 4-cyl)

Alternate suspension: rear double A-arm

Air cleaner may protrude through engine hatch

Solstice (non-turbo)

**PORSCHE**

356, except Carrera and 1500, 1600

1300

912 &amp; 912E (1600 &amp; 1971 cc)

914 (4-cyl)

Cylinder barrels of alternate material allowed

924 (1984 cc, non-turbo)

Alternate cylinder: 933.104.302.50

**SATURN**

Sky (non-turbo)

**SUNBEAM**

Alpine

**TOYOTA**

Celica (non-turbo) (1970-77)

Celica (non-turbo) (1978-81)

Celica (non-turbo) (1982-85)

Corolla (non-turbo) (1968-70)

Corolla (1588 cc) (1971-74)

Corolla (non-turbo) (1971-74)

Corolla (non-turbo) (1975-79)

Corolla (non-turbo) (1980-83)

Corolla (non-turbo, RWD) (1984-87)

MR2 (1587 cc, non-supercharged) (1985-89)

MR2 (2164 cc, non-turbo) (1991-95)

MR2 Spyder (1794 cc) (2000-05)

Starlet (non-turbo, 2WD) (1981-84)

Alternate engine: 4A-G 1.6L w/ cylinder head 11101-16010 or 11101-16030

**TRIUMPH**

GT6 (1998 cc)

Spitfire 1147



**DP (CONTINUED)**

Spitfire 1296 MkIII  
Spitfire 1296 MkIV  
Spitfire 1493  
TR-2 & TR-3  
TR-4 & TR-4A (beam axle)  
TR-4A (IRS)  
TR-7 (1998 cc)  
Alternate rear spoiler: V-775

**TURNER**

950S  
1500  
Alternate crankshaft: 125 E

**TVR**

1800  
*Vixen S2 (1599 cc)*

**VOLKSWAGEN**

Beetle (1300) (1965-66)  
Beetle (1300, 1500, & 1600) (1967-69)  
Beetle (1600) (1970-77)

**VOLVO**

122S (1956-70)  
Alternate part: front axle cross member  
Alternate engine kit: 2127 cc  
142S & 142E (1967-74)  
Alternate part: front axle cross member  
Alternate engine kit: 2174 cc  
P-1800 (1780 cc)  
P-1800 (1982 cc)  
Sedans (RWD, NOC)

“CATCH-ALL”: Other (4-cyl N/A, RWD, NOC)

**E PREPARED (EP)**

Wheel size allowances are as per Section 17.4.

Minimum weights are determined by engine displacement. Increases in engine displacement resulting from legal overbore are not considered in these calculations.

Wheels up to 10" wide are allowed with no weight increase; a maximum width of 12" is permitted.

**WEIGHT FORMULAS (LBS.):**

Piston Engines:  $1.00 \times \text{displacement (cc)}$

Engines with 3 or 4 valves per cylinder and displacement less than or equal to 1667cc: .....  $1.06 \times \text{displacement (cc)}$

Engines with 3 or 4 valves per cylinder and displacement greater than 1667cc: .....  $0.91 \times \text{displacement (cc)} + 250 \text{ lbs.}$

Engines with 2-valves per cylinder: .....  $1.00 \times \text{displacement (cc)}$

Level 2 (Limited Prep) vehicles: .....  $1.00 \times \text{displacement (cc)}$

**WEIGHT ADJUSTMENTS (LBS.):**

Wheels greater than 10" wide up to 12" wide: ..... +100

Regardless of the weight formulas above no car may weigh less than 1350 lbs. or be required to weigh more than 2200 lbs. prior to addition of weight adjustments defined herein and in Section 17.

**ACURA**

Integra (1986-89)

Integra (1990-93)

Alt engine: 1590 cc

Integra (1994-2001)

RSX (2002-06)

Sedans (N/A, FWD, NOC)

**AUDI**

4000S (non-turbo, FWD) (1980-87)

Sedans (N/A, FWD, NOC)

**AUSTIN & MORRIS**

America (1968-71)

Mini Cooper S (1275)

Alternate engine: 850, 970, 997, 998, 1071, or 1098 cc

Firewall modification for adjustable front track rod, front lower suspension arm.

**CHEVROLET, PONTIAC, BUICK, OLDSMOBILE, & CADILLAC EQUIVALENTS**

Beretta (4-cyl & V6) (1987-96)

Chevette (1976-87)

Citation (1980-85)

Nova (FWD) (1985-88)

Sonic (non-turbo) (2012-17)

Spectrum (1985-88)

Sprint (non-turbo) (1985-91)

**CHRYSLER, PLYMOUTH, DODGE, EAGLE, & MITSUBISHI**

Colt & Champ (non-turbo) (1979-83)

Colt & Mirage (non-turbo) (1984-88)

Colt, Mirage, & Summit (non-turbo) (1989-92)

Colt & Mirage (non-turbo) (1993-96)

Daytona & Laser (2.2 L non-turbo) (1984-90)

## EP (CONTINUED)

Eclipse, Laser, & Talon (16v & 8v non-turbo, FWD) (1982-90)  
Neon (non-turbo) (1995-2005)  
Omni, Horizon, 024, & TC3 (1978-90)  
Shadow & Sundance (2.2 L) (1986-94)  
Shelby Charger (pre-1979)  
Shelby Charger (1983-87)  
Spirit & Acclaim (4-cyl) (1989-95)  
Sedans (N/A, FWD, NOC)

### FIAT

128 Coupe SL & 3P (1290 cc) (1969-79)  
500 (2011-15)

### FORD & MERCURY

Escort (1997-2002)  
Escort, EXP, Lynx, & LN7 (1982-88)  
Escort & Lynx (1968-81)  
Escort GT & ZX-2 (1991-96)  
Escort GT (1981-90)  
Festiva (1984-97)  
Fiesta (1976-83)  
Focus (1998-2010)  
Probe (non-turbo) (1989-92)  
Probe (non-turbo) (1993-97)

### HONDA

Accord (4-cyl, non-turbo)  
Alternate cylinder head: 12100-P05-010 or 12100-P05-020  
Civic (1170 cc)  
Civic (1237 cc)  
Civic (1488 cc) (1980-83)  
Alternate cylinder head: 12100-664-010 (2v per cyl)  
Civic (1984-87)  
Alternate cylinder head: 1342 cc - 12100-PE2-000, 121000-PE7-000,  
or 12100-PE3-000; 1488 cc - 12100-PE3-010 or 121-XA1-0084  
Civic (1988-91)  
Civic (1992-95)  
Civic (non-Si) (1996-2000)  
Civic Si (1.6L DOHC VTEC) (1999-2000)  
Civic (2001-05)  
Civic (2006-10)  
CRX (1984-87)  
Alternate cylinder head: 1342 cc - 12100-PE2-000, 121000-PE7-000,  
or 12100-PE3-000; 1488 cc - 12100-PE3-010 or 12100-XA1-0084  
Alternate body parts: Mugen front bumper/spoiler, front fender, rear  
fender, & rear bumper  
CRX (1988-91)  
DelSol (1993-96)  
Fit (2009-15)  
Prelude (1978-2001)  
Alternate cylinder head: 12100-PC7-000, 12100-PC7-010, or 12100-  
PC7-020

### HYUNDAI

Sonata (1989-2005)

**EP (CONTINUED)****INFINITI**

I30 (1996-2001)

I35 (2002-04)

**ISUZU**

I-Mark (1985-89)

Impulse (non-turbo) (1990-92)

Stylus (1991-93)

Sport Coupe

**LANCIA**

Beta (1975-82)

Zagato (1975-82)

**MAZDA**

323 &amp; GLC (non-turbo, FWD) (1980-95)

626 (non-turbo, 2WD) (1982-2002)

Mazda2 (2011-15)

MX-6 (non-turbo, 2WD) (1988-97)

Sedan (N/A, FWD, NOC)

**MINI**

Cooper (non-S) (2002-10)

**MITSUBISHI**

Cordia (non-turbo, FWD) (1982-90)

Alternate Specification: No split shift

Eclipse – see Chrysler

*Galant (non-turbo) (1998-2002)*

Mirage – see Chrysler

**NISSAN/DATSUN**

NX (B13 chassis) (1991-93)

Pulsar (N12 chassis) (1983-86)

Alternate cylinder head: 11041-15M00

Pulsar (N13 chassis; 16v) (1987-90)

Alternate cylinder head: 11041-15M00

Alternate engine: A14

Sentra (B11 chassis) (1983-86)

Alternate cylinder head: 11041-15M00

Sentra (B12 chassis; 1.6 L) (1987-90)

Alternate cylinder head: 11041-15M00

Alternate engine: L16

Sentra (B13 chassis; 2.0 L) (1991-94)

Alternate cylinder head: 11041-H5704

Sentra &amp; 200SX (B14 chassis) (1995-99)

Versa (2010-15)

Sedan (N/A, FWD, NOC)

**PEUGEOT**

405 (non-turbo) (1987-91)

**RENAULT**

Alliance, Encore, R-9, &amp; R-11 (1982-89)

Alternate cylinder head: 77005972627

LeCar &amp; R-5 (non-turbo, FWD) (1978-96)

Alternate cylinder head: 7700597627

Firewall/bulkhead modifications when using alternate head

R17 Gordini (1971-77)

Sedan (FWD, NOC)

## EP (CONTINUED)

### SAAB

93 & 96 Sedan (843 cc, 2-stroke)  
96 (non-turbo, FWD) (1960-80)  
99 (non-turbo, FWD) (1969-84)  
900 (non-turbo, FWD) (1979-94)  
Sonett (1498 & 1699 cc)  
Sedan (non-turbo, FWD, NOC)

### SATURN

S & L series (1991-2005)  
ION (non-supercharged) (2003-07)

### SUBARU

GL Coupe (non-turbo, FWD) (1980-89)  
Sedan (non-turbo, FWD, NOC)

### SUZUKI

Swift GA, GL, GTi, & GT (1985-2001)

### TOYOTA

Celica (non-turbo, FWD) (1986-89)  
Celica (non-turbo, FWD) (1990-93)  
Celica (non-turbo, FWD) (1994-99)  
Celica (non-turbo) (2000-05)  
Corolla (non-turbo, FWD) (1984-87)  
Corolla (non-turbo, FWD) (1988-92)  
Alternate engine: 4A-C  
Corolla (non-turbo) (1993-97)  
Corolla (non-turbo) (1998-2002)  
Corolla (non-turbo) (2003-08)  
Paseo (non-turbo) (1991-97)  
Tercel (non-turbo) (1980-82)  
Tercel (non-turbo, FWD) (1983-86)  
Tercel (non-turbo) (1987-90)  
Tercel (non-turbo) (1991-94)  
Tercel (non-turbo) (1995-99)  
Yaris (2007-17)  
Sedans (non-turbo, FWD, NOC)

### VOLKSWAGEN

Corrado (16v, non-supercharged) (1988-95)  
Corrado VR6 (1992-95)  
Rabbit, Jetta, Scirocco, Cabriolet, & Pickup (A1 chassis) (1975-92)  
Golf & Jetta (A2 chassis) (1985-93)  
Golf, GTI, & Jetta (A3 chassis; 1.8 L & 2.0 L non-turbo) (1993-98)  
Golf, GTI, & Jetta (A4 chassis; 2.0 L non-turbo) (1999-2005)  
Golf, GTI, & Jetta (A5 chassis; 2.5 L 5-cyl) (2006-09)  
New Beetle (2.0 L non-turbo & 2.5 L 5-cyl) (1998-2010)  
Sedan (N/A, FWD, NOC)

### YUGO (1986-92)

“CATCH-ALL”: Other (4-cyl N/A, FWD, NOC)

**EP (CONTINUED)****LEVEL 2 (LIMITED PREPARATION) VEHICLES**

This list of vehicles and the allowances below was developed from Level 2 (Limited Prep) vehicles listed in the Club Racing GCR under Production Category. The goal is for these cars to be less expensive and easier to prepare but allow them to be fully competitive with the cars currently in Prepared class E (EP).

The following vehicles are classed in EP with the Level 2 (Limited Prep) allowances per Section 17, Prepared Category, and the specifications listed below.

Permitted optional carburetors, for single carburetor cars, are:

- A. Weber 32DGV, 32DGAV, or 32DGEV
- B. Weber 32/36DGV, 32/36DGAV, or 32/36DGEV
- C. Weber 32/36DFV, 32/36DFAV, or 32/36DFEV
- D. Weber 34DAT, 34DATR, 34DATRA, or 34DMTR
- E. Holley-Weber 5200

**MAKE**

- Model Valve Size In./Ex. (max in.)
- Engine displacement
- Induction
- Additional specifications

**FORD**

- Fiesta (1978-80) 1.41/1.24
- 1598 cc
- (1) 40DCN, 40DCNF, or 40IDF carburetor
- Compression ratio to 11.0:1, valve lift to 0.450"
- Festiva (1988-93) 1.26/1.10
- 1324 cc
- Fuel Injection or Carburetor
- Compression ratio to 10.5:1, valve lift to 0.450"

**GEO**

- Metro 13BA (1989-94) 1.42/1.18
- 1298 cc
- Fuel Injection
- Compression ratio limited to 11.0:1, valve lift to 0.450"

**HONDA**

- Civic, Civic Si, CRX, & CRX Si (1984-87)
- 1488 cc 1.07/1.30
- Fuel Injection or Carburetor
- Compression ratio to 11.0:1, valve lift to 0.390"
- Civic, (all) & CRX (all) (1988-91) 1.14/0.98
- 1493cc
- Fuel Injection
- Compression ratio to 11.0:1; valve lift to 0.390"
- 1590cc
- Compression ratio to 11.0:1; valve lift to 0.390"

**EP (CONTINUED)****RENAULT**

- Alliance/Encore (1984-87) 1.50/1.28  
1721 cc  
Fuel Injection  
Compression ratio to 10.5:1, valve lift to 0.450"

**SUZUKI**

- Swift GA (1989-94) 1.42/1.18  
1298 cc  
Fuel Injection  
Compression ratio limited to 11.0:1, valve lift to 0.450"

**VOLKSWAGEN**

- Golf (GTI, GT, GL) (non-turbo) 1.57/1.30  
1780 cc  
Fuel Injection  
Compression ratio to 11.5:1, valve lift to 0.420"
- Jetta ('85-'91) 1.57/1.30  
1780 cc  
Fuel Injection  
Compression ratio to 11.5:1, valve lift to 0.420"
- Rabbit ('81-'84) 1.34/1.22  
1715 cc  
Fuel Injection  
Compression ratio to 11.0:1, valve lift to 0.450"
- Rabbit GTI (8v) ('83-'84) 1.57/1.30  
1780 cc  
Fuel Injection  
Compression ratio limited to 12.0:1, valve lift to 0.420"
- Rabbit 1.34/1.22  
1588 cc  
(1) 40DCN or 40DCNF w/32mm chokes carburetor or Fuel Injection  
Compression ratio to 11.0:1, valve lift to 0.450"
- Scirocco ('81-'84) 1.34/1.22  
1715 cc  
Fuel Injection  
Compression ratio to 11.0:1, valve lift to 0.450"
- Scirocco (8v) ('83-'88) 1.57/1.30  
1780 cc  
Fuel Injection  
Compression ratio to 12.0:1, valve lift to 0.420"
- Scirocco 1.34/1.22  
1457 cc  
1471 cc  
1457: (1) 40DCN, 40DCNF, or 40IDF w/32mm chokes or Fuel Inj.  
1471: (1) 40DCN, 40DCNF, or 40IDF w/32mm chokes  
Compression ratio to 11.0:1, valve lift to 0.450"
- Scirocco 1.34/1.22  
1588 cc  
(1) 40DCN or 40DCNF w/32mm chokes or Fuel Inj.  
Compression ratio to 11.0:1, valve lift to 0.450"

**F PREPARED (FP)**

Wheel size allowances are as per Section 17.4.

Minimum weights are determined by engine displacement. Increases in engine displacement resulting from legal overbore are not considered in these calculations.

Wheels up to 10" wide are allowed with no weight increase; a maximum width of 12" is permitted.

**WEIGHT FORMULAS (LBS.):**

Piston Engines:  $0.75 \times \text{displacement (cc)}$

Rotary Engines:  $0.70 \times \text{specified displacement (cc)}$

Forced Induction:  $+ 0.450 \times \text{displacement (cc)}$

Peripheral Port Rotary:  $+ 0.050 \times \text{displacement (cc)}$

**WEIGHT ADJUSTMENTS (LBS.):**

Wheels greater than 10" wide up to 12" wide: .....Add 100

AWD: .....Add  $0.100 \times \text{displacement (cc)}$

FWD: .....Subtract  $0.100 \times \text{displacement (cc)}$

Solid Drive Axle:..... Subtract  $0.05 \times \text{displacement}$

Regardless of the weight formulas above no car may weigh less than 1900 lbs. or be required to weigh more than 2700 lbs. prior to addition of weight adjustments defined herein and in Section 17.

**WEIGHT CALCULATION EXAMPLE:**

Subaru WRX STI (2.5 L) with 11" wheel width

Actual displacement (before overbore): 2457 cc

The formula would be:  $0.750$  (piston engine) +  $0.450$  (forced induction) +  $0.100$  (AWD) =  $1.3$  (total weight factor).

Calculated weight:  $1.3 \times 2457 = 3195$  lbs. (exceeds maximum limit).

$2700$  lbs. (maximum calculated weight) +  $100$  lbs. (wheel width over 10" weight adjustment) =  $2800$  lbs. (total competition weight).

**ACURA**

NSX (1990-2005)

**ALFA ROMEO**

GTV V6 (1981-86)

**AUDI**

4000, 4000 Quattro, Coupe Quattro, Coupe (1981-87)

90 Coupe, 90 Quattro Coupe & Sedan (1990-91)

TT

**AUSTIN-HEALEY**

3000 (1959-67)

100-6 (1956-59)

**BMW**

1 Series (6-cyl non-turbo, E82/E88 chassis) (2008-10)

3 Series (6-cyl 12v, E30 chassis) (1984-90)

3 Series (6-cyl 24v, E36 chassis) (1992-98)

3 Series (6-cyl all, E46 chassis) (1999-2005)

3 Series (6-cyl non-turbo, E90/E91/E92/E93 chassis) (2006-13)

**CHEVROLET**

Sprint Turbo



**FP (CONTINUED)**

**CHRYSLER, PLYMOUTH, DODGE, EAGLE, & MITSUBISHI**

Colt Turbo

Daytona & Laser (Turbo) (1984-89)

Omni Turbo

Shadow & Sundance (Turbo) (1987-94)

SRT-4 (Neon chassis) (2003-05)

Talon & Laser (Turbo, FWD & AWD) (1989-94)

Conquest & Starion Turbo

**FERRARI**

Dino 246

Dino 246 GT

308 (all)

**HONDA**

S2000 (2000-09)

**ISUZU**

I-Mark RS (16V & Turbo, FWD)

**JAGUAR**

XKE (1961-74) (6-cyl)

XKE (1961-74) (V12)

**LEXUS**

IS300 (2001-05)

**LOTUS**

Elise & Exige (normally-aspirated) (1996-2010)

**MAZDA**

MazdaSpeed Protégé (2003)

MazdaSpeed MX-5 Miata (2004-05)

MX-6 (12A Rotary, no peripheral port) (1988-97)

MX6 GT Turbo

RX-2 (12A) (1971-74)

Specified Displacement: 2292 cc

Alternate Specification: No peripheral port

RX-3 (12A) (1971-78)

Specified Displacement: 2292 cc

Alternate Specification: No peripheral port

RX-4 (12A or 13B) (1974-78)

Specified Displacement: 12A, 2292 cc; 13B, 2616 cc

Alternate Specification: No peripheral port

RX-7 (12A or 13B, bridge or peripheral porting allowed) (1979-85)

Alternate engine: Renesis

Specified displacement: 12A, 2292 cc; 13B & Renesis, 2616 cc

RX-7 (13B, bridge or peripheral porting allowed) (1986-91)

Alternate Engine: Renesis

Specified displacement: 13B & Renesis, 2616 cc

RX-8 (bridge or peripheral porting allowed)

Alternate engine: 12A or 13B

Specified displacement: 12A, 2292 cc; 13B & Renesis, 2616 cc

Standard intake manifold may be used

**MINI**

Cooper S (2002-13)

**MITSUBISHI**

Eclipse Turbo (FWD & AWD) (1990-98)

Lancer Evolution (2003-06)

**FP (CONTINUED)****MORGAN**

Plus 8

**NISSAN & DATSUN**

240Z, 260Z, 280Z (incl. 2+2) (1970-78)

Alternate part: headlight covers

280ZX (incl. 2+2) (1979-83)

Alternate part: headlight covers

300ZX (Z31 chassis) (1984-89)

Alternate part: headlight covers

300ZX (non-turbo, Z32 chassis) (1990-96)

Alternate part: rear facing hood scoop (3.5" max height)

350Z

370Z (2009-17)

**PONTIAC**

Fiero (V-6 2.8L)

Alternate suspension: rear double A-arm

Air cleaner may protrude through engine hatch

Solstice GXP

**PORSCHE**

911 (3.6L &amp; under, non-turbo)

Alt cyl heads: twin plug

914-6 (2.0L, 2.5L, 2.7L, &amp; 2.8L 6-cyl air-cooled)

Alt cyl heads: twin plug

924S (1986-88)

Alternate cylinder head: P/N 933.104.302.50 w/ 36 mm ex. valves

924 Turbo

944 (non-turbo, all) (1982-91)

944 Turbo (1985-91)

968 (1992-95)

Boxster &amp; Cayman

**SAAB**

99 (1968-84)

900 Turbo &amp; 900 SPG Turbo 16v (1979-88)

**SATURN**

Sky Red Line

**SUBARU**

Impreza (AWD) &amp; WRX (all)

SVX (1992-97)

Sedans/Coupes (Turbo, NOC)

**SUZUKI**

Swift Turbo

**TOYOTA**

Celica All-Trac (1988-89)

Celica All-Trac (1990-93)

Celica All-Trac (1994-99)

Celica Supra (1979-81)

Celica Supra (1982-86)

Supra (non-turbo) (1986½-92)

Supra (non-turbo) (1993-98)

MR2 Supercharged (Mk1 chassis) (1988-89)

Alternate parts: 1985-89 chassis

MR2 Turbo (1991-95)

**FP (CONTINUED)**

TRIUMPH

TR6 (1969-76)

TR8 (215 c.i. or 4L)

TR250 (1967-68)

TVR

6-cyl

VOLKSWAGEN

Corrado (1.8L Supercharged w/ 54 mm inlet restrictor) (1990-95)

Golf, GTI, & Jetta (TDI or VR6, A3 chassis) (1993-98)

Golf, GTI, & Jetta (1.8T, TDI, or VR6, A4 chassis) (1999-2005)

Golf, GTI, & Jetta (2.0T or TDI, A5 chassis) (2006-10)

New Beetle (1.8T or TDI) (1998-2010)

R32 (3.2L V6, AWD) (2004)

“CATCH-ALL”:

Sedan (4-cyl forced induction or 6-cyl, NOC)

## MODIFIED CATEGORY

All listed weights are with driver except where noted otherwise. Weights not listed default to the appropriate SCCA® Club Racing GCR (General Competition Rules) reference. “Car” is defined in Section 12. In the Solo® Rules Sections where preparation allowances are specified and if there are conflicts with the GCR allowances, the Solo® Rules shall take precedence.

### MODIFIED CLASS A (AM)

Cars with a minimum weight of 900 lbs. with driver and a minimum 72” (182.9 cm) wheelbase, plus Formula SAE as specified in Section 18.5. Club Racing GCR-compliant Formula S (FS) and A Sports Racer (ASR) vehicles may compete in this class.

### MODIFIED CLASS B (BM)

All Formula Cars or Sports Racers compliant under the current Club Racing GCR Sections 9.1.1.A.1 a-h or 9.1.8.D.1 A-H, unless specifically classed elsewhere, with the following exceptions:

- A. Spec tires are not required.
- B. Minimum wheelbase of 80” (203.2 cm).
- C. Sports Racers and all Open-Wheel Cars including Formula Atlantics:
  1. Turbocharged and supercharged engines are not permitted.
  2. May use any automobile-based 2v/cyl engine up to 1300 cc, any 2-stroke motor up to 900 cc, any 4v/cyl or more engine up to 1005 cc.
    - Minimum weight with driver (lbs.):.....1020
  3. May use any 2v/cyl automobile-based production engines up to 1615 cc.
    - Minimum Weight with driver (lbs.):.....1110
  4. May use any 4v/cyl or more engine up to 1615 cc. May use any 2-stroke up to 1300 cc or Mazda 12A rotary with any porting and any carburetion. May use fuel injection without weight penalty as required by the GCR.
    - Minimum weight with driver (lbs.):.....1180
  5. May use any engine up to 3000 cc.
    - Minimum weight with driver (lbs.):.....1285
  6. Minimum rim width:..... none
  7. Maximum allowed rim width (in.):..... 15
  8. Transmissions – No restriction on mechanical shift sequence/pattern, use of transverse types (motorcycle transmission or similar), number of gears, or use of CVT in any vehicle.
  9. Minimum width for all cars shall be no less than 57” as measured at the narrowest end of the car at the tire outer sidewalls with a minimum 14 psi of tire pressure.
  10. All prohibited cost control items in P2 per GCR Section 9.1.8.D.A apply to formula cars as well as sports racers with the following Solo® changes to the list:
    - a. All chassis/tub over 75% composite are allowed and incur no weight penalty unless under either 96” wheelbase or 66” rear sidewall-to-sidewall outside width (measured with tire pressure at least 14 psi), in which case minimum weight is increased by 50 lbs.
    - b. Direct injection for non-automobile engines incurs a weight adjustment of an additional 25 lbs.

D. Formula 2000 and Formula Continental per GCR/FCS:

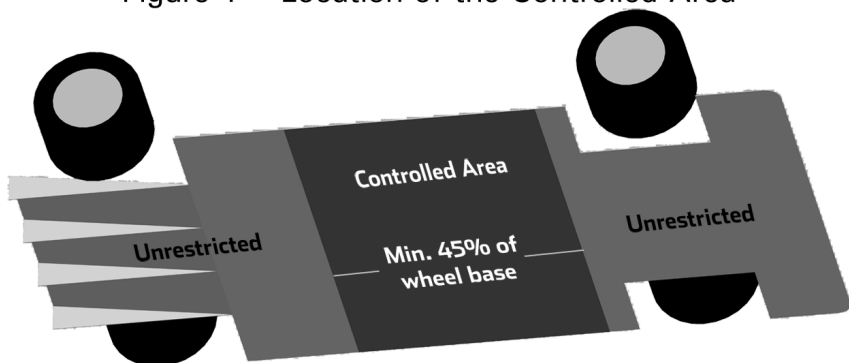
1. Minimum weight with driver (lbs.):.....1090
2. Rim width:.....unrestricted
3. Airfoil maximum size per Formula Atlantic rules.

E. Aerodynamic restrictions for Sports Racers:

1. The total area when viewed from the top of front and rear wings shall not exceed 8 sq. ft. (0.743 m<sup>2</sup>). Area calculation is of the airfoil element plan view and does not include side plates. Side plate area and element profile are unrestricted.
2. Cars with underbody features built in excess of P2 aerodynamic allowances (2015 GCR Section 9.1.8.D and 9.1.8.E) must meet a weight penalty of 50 lbs. and must be constructed within the following limitations:
  - a. For the full width of the body the floor pan will be a minimum of 45% of the wheelbase; the lower surface (surface licked by the air stream) shall not exceed  $\pm 1"$  (2.54 cm) deviation in any longitudinal section through the plane forming the bottom of the tub or chassis floor. The 45% minimum (of the wheelbase) dimension is measured from the point that the surface meets the full width of the body (behind the front wheel or in front of the rear wheel). (This is not to be interpreted as requiring a floor pan beneath the motor, transaxle, transmission, or final drive housing.) See Figure 1.
  - b. No aerodynamic devices (e.g. "skirts," body sides, etc.) may extend more than 1 cm (0.394") below this lower surface anywhere on the car to the rear of the front axle. Seat bucket or other protrusions shall not circumvent this rule.
3. The current GCR P2 underbody aero specifications shall apply to all sports racers and production cars as recognized in DM and EM running in BM as sports racers.
4. Production cars running in BM must have the tires as viewed from above at least half covered. Cycle fenders may be used to comply with a sports racer classification.

F. Aerodynamic restrictions for Formula Atlantic (all open-wheel in BM) shall follow the current Club Racing GCR Formula Atlantic Preparation Rules with the following Solo® allowances:

Figure 1 – Location of the Controlled Area



1. Wings and all other aerodynamic devices front and rear may match but shall not exceed sports racer P2 GCR maximum height (45.25" per P2 GCR 9.1.8.D.D.2 ).
2. Front wing width may match but shall not exceed overall front width as measured at the tires. Front wing elements may not extend behind the front wheel centerline.
3. Rear wing width shall not exceed the Club Racing FA specs with the exception that endplate gurney lips are not included. Endplate Gurney lips shall not exceed 7 cm (2.756") additional width per side and shall not deviate more than 10° from vertical. No part of the entire rear wing assembly, including wing elements and end plates, shall extend more than 1 m (39.37") to the rear of the rear wheel centerline.
  - a. Except for cars meeting the dimensions of subsection F.3.b herein, the rear wing element assembly maximum plan view fore-aft dimension shall not exceed 70 cm (27.56").
  - b. For cars 66" wide or more at the rear tires and which also meet a weight of 1180 lbs, the fore-aft dimension of the rear wing element assembly plan view shall not exceed 90 cm (35.43").
4. Side pod or other parts not considered chassis are not required to attach or stay above a line situated 1 cm (0.4") above the chassis bottom (this is an exception to GCR 9.1.1.A.1.g.10).
5. Flexible ground sealing is permitted on cars 66" wide or more at the rear tires and which also meet a weight of 1180 lbs.

### **MODIFIED CLASS C (CM)**

- A. Modified Class C (CM) allows the Solo® Vee and the following SCCA® Club Racing GCR-compliant cars: Spec Racer Ford (SRF), Formula F (FF). Within the limitations of the GCR, additional frame bracing, suspension and steering changes, relocation of ancillary components (radiators, batteries, etc.), and their associated mounting brackets is permitted. Nothing in these rules is to be construed as overruling any GCR construction requirements or limitations except for those safety items which the Solo® Rules do not require. The purpose of these rules is to maintain the value of these cars for Club Racing and therefore their market value, and to prevent special Solo®-only Formula F vehicles.

Exceptions to the Club Racing GCR for all cars in this class:

1. Spec tire requirements do not apply.
2. Formula F (FF) weight with driver, minimum:
 

Ford Cortina engine (lbs.) .....	1050
Ford Kent and Honda Fit engines (lbs.) .....	1100
3. Only cars produced by the following manufacturers are eligible for FF in this class: ADF, Alexis, Anson, Caldwell, Citation, Crossle, Dulon, Eagle, Elden, Forsgrini, Gemini, Hawke, Konig-Heath, LeGrand, Lola, Lotus, March, Merlyn, Mondiale, Piper, PRS, Reynard, Royale, Stohr, Swift, Tiga, Titan, Van Diemen, Winkleman, and Zink. The SEB may add to this list at any time, effective upon notification of the membership.

- B. Other Club Racing GCR-compliant Formula Cars

1. Formula Vee (FV)
2. Formula First (FST)

- C. Solo® Vee as per the following definition: Solo® Vee is based on Club Racing Formula Vee (FV) and all cars shall meet all specifications described in

the Club Racing GCR Sections 9.1.1.C.1, C.2, C.3, C.4, C.6, C.7, C.8, C.9, C.10, C.11 and C.12 except as amended in these rules. No permitted or alternate component or modification shall additionally perform a prohibited function.

## 1. ENGINE CHOICES

- a. Any standard 1600 cc or smaller air-cooled automobile engine manufactured by Volkswagen (VW) for sale in VW vehicles available to the general public for purchase in the US is allowed.

1. Solo® Vee engines may increase compression up to and including 10:1 ratio with OE bore and stroke. Compression ratio may be increased by additional machining of any factory machined surface on the cylinder heads only. Fuel injection is prohibited. Valve size may be increased to a maximum of 40.0 mm intake and 35.5 mm exhaust. Port location may not be changed from OE standard. Machining of any type in the combustion chamber such as, but not limited to, valve unshrouding is prohibited. Valve guide centers shall remain OE standard. OE standard heads shall be used; however, alternate VW heads with casting numbers 040 101 355 or 043 101 375 may be substituted. Any single carburetor (regardless of the number of venturis) is permitted. Multiple carburetion is restricted to a maximum of two 44 mm carburetors with 28 mm venturis. If a balance tube is used between manifolds runners, it shall be restricted to one ½" (0.500", 50.8 mm) ID pipe. Any intake manifold not having a plenum chamber is permitted.

OR

2. Increase bore up to and including 94 mm maximum per cylinder, total displacement of 1915 cc. Machining to allow the installation of the cylinders is permitted. No other combustion chamber machining (such as, but not limited to, unshrouding of the valves) is permitted. Valve guide centers must remain OE standard. Increased displacement engines up to 1915cc are restricted to maximum valve sizes 39 mm intake and 32 mm exhaust. Port location may not be changed from OE standard. OE standard heads shall be used; however, alternate VW heads with casting numbers 040 101 355 or 043 101 375 may be substituted. A maximum compression ratio of 9:1 is permitted. Compression ratio may be increased by additional machining of any factory machined surface. Any single carburetor may be used. Multiple carburetors are prohibited. Any intake manifold not having a plenum chamber is permitted.

- b. There shall be no mixing of allowances (e.g., carburetors from 1 above and displacement from 2 above).

## 2. ENGINE COMPONENTS

- a. Mixing of parts between different air-cooled engine models is permitted. All parts must meet VW specifications for engines delivered for use in the US in VW vehicles unless otherwise noted herein.
- b. Balancing of all moving parts is permitted provided balancing does not remove more material than necessary to achieve balance.
- c. Parts from alternate manufacturers or remanufactured parts are permitted provided said parts are of the same material, are dimensionally identical, and meet all original VW specifications for engines delivered for use in the US in VW vehicles. This would include VW

- replacement heads as specified without raised ports and aluminum engine cases. Aftermarket magnesium engine cases may also be substituted.
- d. The flywheel from either the alternate engine or from the 1200 cc engine may be used. Minimum flywheel weight is 12 lbs. Any single disk clutch may be used. The transmission housing may be machined to provide clearance when using the alternate engine/flywheel assembly.
  - e. Any exhaust system which terminates more than 3" (7.62 cm) behind the rearmost part of the body may be used.
  - f. Counterweighted crankshaft and 8-dowel pinned crankshaft-to-flywheel mounting are allowed. All journal dimensions and relationships with each other must remain as standard. Crankshaft journals may be ground undersize a maximum of 0.030" (0.762 mm) less than standard dimensions. Crankshaft pulley is unrestricted.
  - g. Deep sump oil pan up to 2.5 qt. (2.37 L) additional capacity is permitted. The installation of baffles housed completely within the oil pan and crankcase is permitted. The use of any standard VW oil pump is permitted. Dry sump systems are permitted. Replacement of oil gallery plugs with threaded plugs is permitted. Oil filters and oil coolers are unrestricted provided that they are securely mounted completely within the bodywork. A pressure accumulator (e.g., Accusump®) may be fitted.
  - h. Camshaft and valve train components are unrestricted with the following exceptions:
    - 1. Pushrods shall be made of metal.
    - 2. Valve lifters (tappets) shall be dimensionally and functionally identical to and made of the same material as the standard VW parts.
    - 3. Roller camshafts are prohibited.
    - 4. Rocker arms shall be standard ratio VW.
    - 5. Valve guide material is unrestricted provided that the distance between valve centers and the angles of the valves does not change.
  - i. Porting, polishing, and machining of the intake and exhaust ports is permitted. The addition of material in any form is prohibited. Valve seat angles are unrestricted.
  - j. Compression ratio may be increased by additional machining of any factory machined surface on the cylinder heads only. Installation of a spark plug hole repair utilizing standard thread repair methods (e.g., Helicoil®) is permitted providing that the spark plug centerline is not changed.
  - k. Complete or partial removal of any cooling duct component. Removal of the fan and the fan housing is permitted. Any electric fan is permitted for cooling the engine or engine oil.
  - l. Voltage regulator, generator, and/or generator stand may be removed.
  - m. One or more batteries may be used.
  - n. Any ignition system that utilizes a distributor for spark timing and distribution may be used. Distributor shall require no modification to the engine for installation. Internal distributor components and distributor cap may be substituted.



- o. Valve covers are unrestricted and may be bolted on.
- p. Electric radiator/engine cooling fan(s) may be installed.

### 3. TRANSAXLE

- a. Aftermarket shift forks/shift rod/mounting parts and alterations required for their installation is permitted with the intent of facilitating reliable H-pattern shifting.
- b. This allowance does not include sequential shifting (push button or single axis lever movement) mechanisms or electric/gas assist. Cable/hydraulic actuating mechanisms are allowed.
- c. Any primary or final drive gears of any origin may be used. This does not allow the use of alternate transaxles. A reverse gear is not required.
- d. A device for locking-out reverse gear may be used.
- e. A limited-slip differential (LSD) is permitted.

### 4. BODYWORK

Bodywork to the rear of the main roll hoop may be removed.

### 5. FRONT SUSPENSION

The front suspension shall be standard VW Type 1 sedan H-beam front suspension (i.e., link pin or ball joint) or an exact replica of one of them and dimensionally identical. Aluminum H beams are prohibited. The following modifications are permitted:

- a. Lugs welded, brackets attached by welding or otherwise, and holes drilled in the H-beam to permit attachment of the beam to the chassis, and components wholly or partially to the beam. Brackets may be welded to the torsion arms for the sole purpose of actuating the shock(s) and/or external mounted anti-roll bar and shall perform no other functions.
- b. Open springs. Torsion bars may be used in conjunction with coils or may be removed entirely. "Coil-overs" are permitted.
- c. Removal of the shock towers above the upper H-beam tube centerline.
- d. Relocation of the shock dampers. Shock dampers and their actuation are free.
- e. The use of any anti-roll bar or bars, internal or external, mounting hardware, and trailing arm locating spacers. The anti-roll bar fitted as part of the standard suspension may be removed. Anti-roll bars may not be cockpit adjustable.
- f. Replacement of torsion bar rubbers with spacers of another material.
- g. Installation of any ride height adjuster(s).
- h. Removal of the drum brake backing plates.
- i. In the link pin suspension, non-standard offset link pin bushings in order to obtain desired negative camber. Clearancing of carrier or trailing arm to prevent binding is permitted. The rubber portion of the bump stop may be removed. Caster, camber, toe-in, and link pin inclination are free.
- j. In the ball joint suspension, the camber/caster adjusting replaced with an aftermarket nut of different design. Caster, camber, and toe-in are free.

- k. Any wheel bearings that fit the VW sedan spindles and brake drums or disk brake hubs without modification.
- l. Steering column altered or replaced. Steering wheel is free and may be detachable. Steering mechanism is free but tie rods must attach to the spindle using existing steering arm, a modified steering arm, or a suitable new or modified bracket welded to the spindle. Ball joints in the tie rods may be replaced with rod ends.

#### 6. WHEELS

- a. Any wheels and tires are allowed. Resulting track changes are allowed. Studs may be substituted for wheel attachment bolts in the original location. Bolt pattern may be changed.
- b. 4- or 5-lug wheel hubs may be used. Wheel mounting lug bolts may be replaced with studs.

#### 7. REAR SUSPENSION

- a. The rear axle and tube assembly shall be standard VW Type 1 sedan (up to 1966) swing axle (no outer pivot point for a half shaft) with axle location provided by a single locating arm on each axle. The rear axle tube may be rotated about its axis. The standard shock mounting and brake pipe brackets may be removed.
- b. The rear axle bearing retainer flange mating surface may be machined or shims may be installed under the rear axle bearing for the sole purpose of adjusting bearing axial float.
- c. Springs, shock dampers, their actuation, and camber compensating devices are free.

#### 8. BRAKING SYSTEM - FRONT AND REAR

- a. Standard VW Type 1-3 brake components, disk or drum, may be used including any standard VW Type 1-3 original. Use of aftermarket hubs, disc or drum brake components in the front or rear of the vehicle, or any combination thereof is unrestricted as long as the units chosen are deemed safe.
- b. Caliper housing material may be removed on the outer radius surface of the outer piston housing to clear the inside of the rotating wheel.
- c. Any type lining or pad material may be used.
- d. Adapter plates may be fitted to allow mounting of front or rear brake calipers.
- e. Cross-drilling or grooving of rotors is permitted. Rotors made of a ferrous material shall be used on both the front and rear of the car.
- f. Caliper mounting is free. Rotors must be of ferrous material. Hubs and hats may be made of ferrous material or aluminum.
- g. The car shall be equipped with a dual braking system operated by a single control. In case of a leak or failure at any point in the system, effective braking power shall be maintained on at least 2 wheels.
- h. A separate hand brake is not required. Removal of the hand brake and operating mechanism is permitted.
- i. Brake lines may be of any suitable material, including steel braided lines.

#### 9. WEIGHT

Minimum weight with driver (lbs.):.....1000

**MODIFIED CLASS D (DM)**

Modified Production and GT cars with internal combustion engine displacement 2000 cc and under as follows:

- A. The Mazda 12A and 13B Rotary engines are permitted in DM with the following restrictions:
1. No replacement of cast iron engine case segments with aluminum.
  2. On the 12A engine, only side and rotor housings from 1974-86 engines shall be used.
  3. No replacement of 12A or 13B sections, such as side plates, with those from other series engines (i.e., Renesis-type parts).
  4. On 12A engines: no peripheral-porting or J-porting is allowed. Bridge-porting that does not cut into the water O-ring is permitted. On 13B engines, 4- and 6-port: Maximum porting permitted is street-porting. No bridge-porting, J-Porting, or peripheral-porting.
- B. Weight with driver vs. computed displacement (lbs.):
- Piston engines, normally-aspirated up to & including 1800 cc.....1280
  - 12A rotary engines, normally-aspirated w/ porting restriction .....1280
  - Piston engines, normally-aspirated 1801-2000 cc.....1380
  - 13B rotary engines, normally-aspirated w/ porting restriction.....1380
  - Forced induction w/ displacements per 18.0.B, up to 2000 cc w/ inlet restrictor .....1380
- C. Performance Adjustments (lbs.):
- AWD .....Add 200
  - Modified Tub.....Add 40
  - TCS.....Add 200
  - ABS and/or SCS (no additional weight adjustment).....Add 250
- D. Weight Bias Adjustment with driver sitting in the driver's seat (lbs.):
- RWD with less than 51% weight on drive wheels .....Deduct 35
  - FWD.....Deduct 35
  - AWD .....Not affected

**MODIFIED CLASS E (EM)**

Modified Production and GT cars as follows:

- A. Weight with driver vs. Displacement (lbs.):
- Piston engines up to & including 3200 cc OHC .....1700
  - Piston engines up to & including 4500 cc pushrod/OHV .....1700
  - 2-rotor rotary engines with unrestricted porting.....1700
  - Piston engines unlimited displacement.....1800
  - 3-rotor rotary engines with unrestricted porting.....1800
  - Electric powerplants (non-hybrid) .....1800
- B. Performance Adjustments (lb.):
- AWD .....Add 300
  - Modified Tub.....Add 50
  - TSC .....Add 300
  - ABS and/or SCS (no additional weight adjustment).....Add 375

## C. Weight Bias Adjustment with driver sitting in the driver's seat (lbs.):

- RWD with less than 51% weight on drive wheels ..... Deduct 50
- FWD..... Deduct 50

**MODIFIED CLASS F (FM)**

## A. Club Racing GCR-compliant Formula 500 (F5) with the following exceptions (listed weights are with driver):

1. F5 cars manufactured prior to the current requirement for rubber vibration isolation need not conform to the current GCR Section 9.1.1.D.3.C.
2. F5 cars manufactured prior to January 1, 1990 need not comply with crushable structures as defined in the current GCR Section 9.1.1.D.9.
3. F5 cars manufactured prior to January 1, 1990 which utilize a 73" (185.42 cm) wheelbase may compete even though the driver's feet extend beyond the front edge of the wheel rims.
4. Minimum weights with driver (lbs.):
  - Kawasaki engine ..... 725
  - AMW engine ..... 800
  - Rotax 493 & 494 engine ..... 800
  - Rotax 593 engine..... 850
  - 600 cc motorcycle engine ..... 875
  - Wheelbase of 73" or less with 440 engine ..... subtract 25
5. Rotax 493- & 494-powered cars are permitted to use 34 mm or 38 mm Mikuni round-slide carburetors. AMW powered cars may use either the 38 mm AMW carburetors or update to the 38 mm Mikuni round-slide carburetors. In order to accommodate the use of the approved Mikuni VM 38mm sidedraft carburetors on the AMW engine, the use of the AMW intake manifold (part #2736-00) is permitted as are the AMW rubber attachment boots, gaskets, and/or hardware required for the use of this manifold. Competitors using the Rotax 494 RAVE engine are required to use the 494 non-RAVE rotary valve (Rotax part #924509 or 924508, Ski Doo prefix 420, 147 degree designation that opens @ 135° BTDC and closes @ 64° ATDC) in their engine. RAVE valves shall be blocked in the "full open" position or left as delivered. No other alterations are permitted. 494 RAVE and non-RAVE parts may not be interchanged between the two engines unless specifically noted.
6. Competitors utilizing the Rotax 493 engine may leave the manufacturer's specified intake balance tubes in place or, at their option, completely remove the tubes and make the alterations required to plug the remaining holes. No unnecessary alterations are permitted if the competitor chooses to remove the tubes. The Rotax 493 engine is limited to a Y-pipe exhaust manifold and single expansion chamber as are the Rotax 494 and AMW engines.
7. F5 cars may utilize the Rotax 593 engine (1999 and up; bore: 76 mm, stroke: 65.8 mm) using 38 mm Mikuni roundslide carburetors as an alternate 2-cylinder, 2-cycle, liquid-cooled engine in FM. Such engines must use inlet tract restrictors (Cometic gasket #MA0242SP1020A), one in each tract immediately after the carburetor. Use of the 2003 and up "HO," "SDI," "RS," and "E-TEC" 593 variants is not permitted.
8. All F440 & F500 engines may use any water thermostat. It may be modified or completely removed as necessary to aid water cooling. The wa-

ter bypass may be blocked and alternate water cooling plumbing may be used. Electric water pumps may be used.

9. F440 & F500 cars in FM are not required in Solo® to have the sidepods now mandated by Club Racing if they were manufactured prior to 1984 in which that requirement was added to the GCR. Sidepods may not be removed from a car which was originally manufactured with them. The measurements for the height, the maximum width (bodywork), and the distance from the tires of sidepods as specified in the GCR, Bodywork E.9, 2nd paragraph, shall have an allowance from the GCR of  $\pm 1"$  ( $\pm 25.4$  mm). It is the intent of this allowance to maintain the ability of the sidepod(s) to continue to hold such items as fuel tanks, battery, and radiator(s), but not to allow sidepods to be used for ground effects to achieve aerodynamic downforce on the vehicle.

10. Electric radiator/engine cooling fan(s) may be installed.

- B. DWARF CARS®, 600 RACING INC LEGENDS CARS®, AND BABY GRAND CARS® Vehicles built and prepared to Western States Dwarf Car Association® (WSDCA®), US Legend Cars International®, or MMRA® Baby Grand® specifications are assigned to Modified Class F (FM).

NOTE: If any conflict exists between the WSDCA®, US Legend Cars®, or Baby Grand® Rules and the Solo® Rules, the Solo® Rules shall take precedence.

1. Cars prepared to these specifications are required to comply with the appropriate rules from their sanctioning body, except for the items listed below:

- a. Any tire (including recaps) meeting the applicable portions of Section 3.3 are allowed.
- b. Any differential and final drive gear ratio may be used.
- c. Any shock absorber may be used.
- d. Any wheel up to 10" wide and any diameter may be used.
- e. Any anti-roll bar may be used.
- f. Any air filter is allowed.
- g. Any ballast is allowed provided it is mounted securely per the Solo® Rules.
- h. Any battery may be used.
- i. Engine does not need to be sealed but must conform to the appropriate rule set.
- j. Minimum weight with driver (lbs.): ..... 1250

2. WSDCA®, US Legend Cars®, and Baby Grand® specific items not required are as follows:

- a. INEX-approved manufactured metal seat. Mounting guidelines still apply.
- b. Seatbelt harness dating requirements.
- c. Quick-release steering wheels.
- d. Fire extinguishers.
- e. Fire-retardant driver suit and gloves.
- f. Neck braces.
- g. Head and neck restraints (HNR).

3. Current Solo® Rules override WSDCA®, US Legend Cars®, and Baby Grand® rules for the following items:
  - a. Helmets.
  - b. Car number and class designation.
  - c. Exhaust system, muffler, and tailpipe.



## Alleggerita HLT

anthracite

16x7	17x8.5	18x8.5	18x10
17x7	18x7	18x9	18x11
17x7.5	18x7.5	18x9.5	18x12
17x8	18x8		

## COLOURS

Special order finishes: green, red, blue, orange, matte graphite silver, matte bronze, white, black and gold. Delivery in approximately 60 days.



**NEW**



## Hyper GT

star graphite

18x7	18x8	19x8.5	19x9.5
18x7.5	19x8	19x9	19x10



## Ultraleggera

bright silver

Also available: matte graphite silver, matte bronze, white, gold or black

15x7	17x7.5	18x7	18x8
16x7	17x8	18x7.5	18x9
17x7			

## Ultraleggera HLT

black

19x8	19x10	20x8.5	20x11
19x8.5	19x11	20x9	20x12
19x9	19x12	20x10	

## COLOURS

Special order finishes: gold, red, white, matte graphite silver, matte bronze and matte silver. Delivery in approximately 60 days.

